



# Invertebrate survey at Findhorn Hinterland 2025.

Jenni A. Stockan & Calum Maclure  
[jenni.stockan@hutton.ac.uk](mailto:jenni.stockan@hutton.ac.uk)

Report for Findhorn Hinterland Trust



The James  
**Hutton**  
**Institute**

## **Acknowledgements**

The authors are grateful to the Findhorn Hinterland Trust for funding this work. In particular, we thank Jonathan Caddy, Alan Watson Featherstone, Sean Reed and Neil Meikleham.

**This report should be cited as: Stockan, J.A. & Maclure, C. 2026. Invertebrate survey at Findhorn Hinterland 2025. Report to Findhorn Hinterland Trust.**

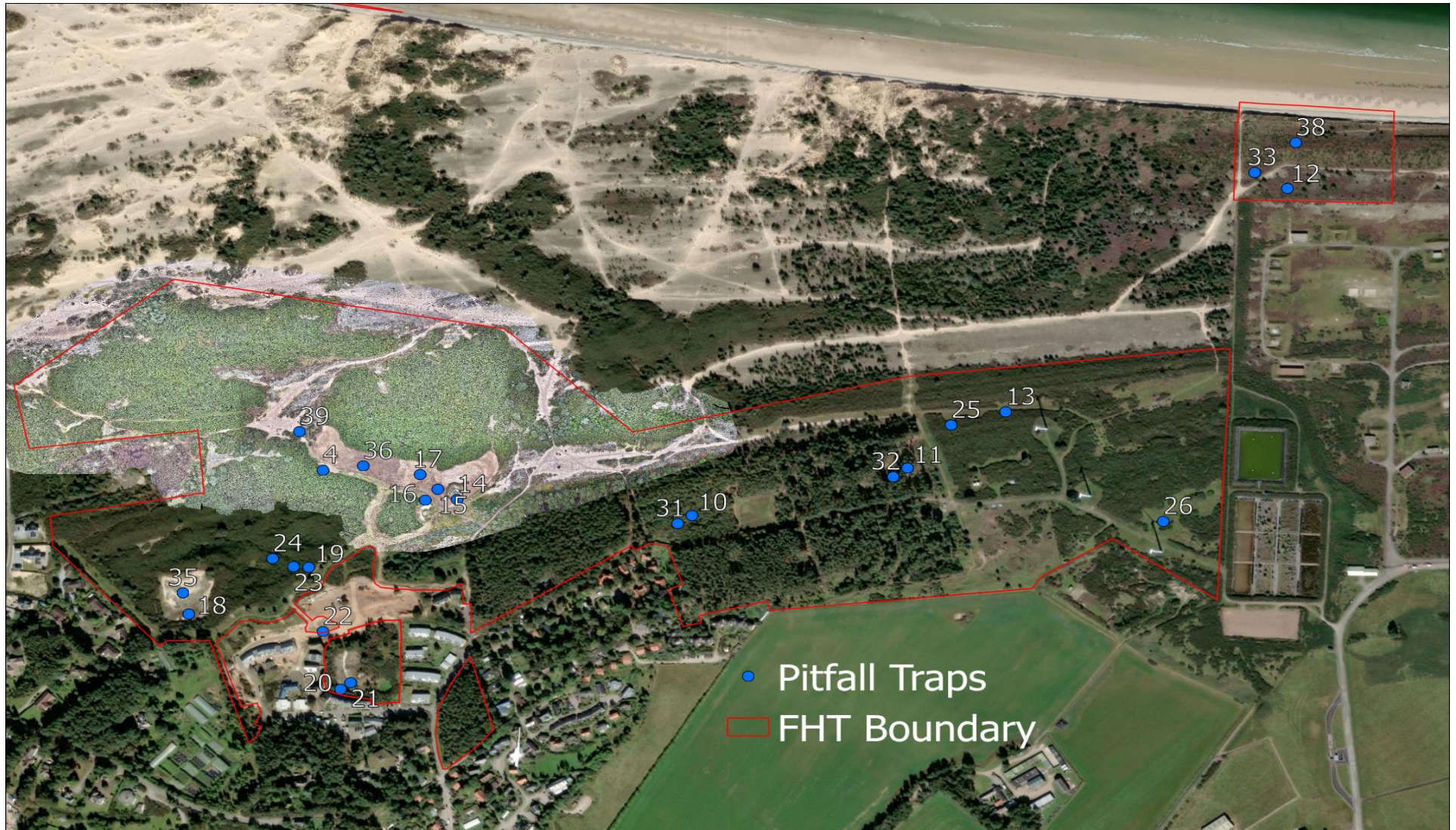
## Contents

<b>SUMMARY .....</b>	<b>5</b>
<b>1. INTRODUCTION .....</b>	<b>7</b>
<b>2. METHODS .....</b>	<b>7</b>
<b>3. RESULTS .....</b>	<b>9</b>
3.1 SUMMARY OF FINDINGS .....	9
3.2 SPECIES WITH CONSERVATION STATUS .....	9
3.3 NEW SPECIES FOR VICE-COUNTY.....	9
3.4 HABITAT-ASSOCIATED SPECIES.....	15
3.5 ECOLOGICAL NOTES ON SPECIES .....	16
<b>4. DISCUSSION AND CONCLUSION .....</b>	<b>26</b>
<b>5. REFERENCES.....</b>	<b>27</b>
<b>APPENDIX 1: ALL SPECIES RECORDS FROM FINDHORN HINTERLAND 2025 .....</b>	<b>30</b>



## SUMMARY

- The Findhorn Hinterland is a 50-hectare site comprising sand dunes and woodland which has been under the management of the Findhorn Hinterland Trust since 2015 and was recently awarded Nature30 status.
- The James Hutton Institute was commissioned in 2025 to carry out a survey of invertebrates, principally beetles (Coleoptera), on a range of habitats across the site but with a focus on bare sand and shingle, which are a Scottish Biodiversity List habitat of conservation importance.
- More than 3,929 invertebrates were sampled by pitfall traps from 9 July to 20 October 2025 and an additional 22 invertebrates sampled by hand between 12 March and 3 September 2025, with 140 species identified including 80 Coleoptera species.
- Important records were made of the Nationally Scarce beetles *Morychus aeneus*, *Trypocopris vernalis*, *Leiodes furva*, and *Epuraea terminalis*, the Nationally Scarce endemic beetle *Psammoporus insularis*, the spider *Drassyllus pusillus* and the lacebug *Acalypta carinata*. The coastal rove beetle rove beetle *Anotylus maritimus*, a habitat specialist associated with fine sand and shingle, was also recorded.
- Analysis via Pantheon shows the site to be in favourable condition for scrub heath and moorland with further assemblages characteristic of open habitats including scrub heath and moorland, scrub edge, short sward and bare ground, sandy beach and decaying wood. Bare sand habitats are currently classified as in unfavourable condition, supporting the Trust's small scale dune restoration work.
- Further survey work covering the missed spring period (particularly May-June) and utilizing different techniques (e.g. sieving litter and sand/shingle) are recommended to detect additional species.



**Figure 1.** Location of invertebrate sampling sites at Findhorn Hinterland 2025.

## 1. INTRODUCTION

This report details the findings of a coastal invertebrate survey carried out at Findhorn Hinterland, Moray, commissioned by the Findhorn Hinterland Trust. The site is located east of the village of Findhorn – approximate central grid reference NJ 05480 64143 (Watsonian vice county 95). The 50-hectare site comprising sand dunes and woodland has been under the management of the Findhorn Hinterland Trust since 2015. The Trust is undertaking restoration work to restore 3 hectares of dune habitat including through scrub clearance.

A number of rare species have already been found on the Findhorn Hinterland but there has been no targeted survey of beetles (Coleoptera). Coastal sand dunes are rich in invertebrates with Coleoptera dominating and potentially making up 25% of the fauna (Macadam et al. 2012). Furthermore, approximately 5% of all Coleoptera (of Wales at least) are strongly, or only, associated with coastal sand dune habitats (Howe et al. 2010). Of the invertebrate species strongly associated with coastal sand dune habitats across Great Britain, 100 species have a conservation designation (Buglife 2019) and/or are rare in a Scottish context (Philp & Hamlin 2016).

The objective of this work was to undertake an invertebrate survey of the Findhorn Hinterland area using pitfall trapping, to target particularly Coleoptera. The aims were to generate records to add to the Findhorn Hinterland inventory which will aid conservation efforts and to generate baseline data that could be used as a comparison for future surveys following specific restoration measures (e.g. gorse removal).

## 2. METHODS

Pitfall trapping was used as the main sampling method given its suitability across different habitats, repeatability and efficiency in sampling Coleoptera; 3.5x more species sampled in one coastal survey compared to other methods (Armstrong & Holloway, 2019). Twenty-five pitfall traps, placed at least 10 m apart, were installed on 9 July 2025. Traps were positioned to cover as large an area as possible and a range of habitats (Table 1; Figure 1) from open to shaded. The inclusion of some habitats (e.g. gorse) will enable a comparison of pre- and post- restoration should this survey be repeated in the future.

The traps consisted of a polypropylene cup, 7.5 cm diameter x 10 cm deep, part filled with ethylene glycol to act as a preservative. A mesh cage made from chicken wire (~15 mm x 20 mm mesh) served as mammal/amphibian deterrent and an opaque acrylic roof on tripod legs prevented infill of rainwater. The contents were emptied at approximately 4-week intervals on 28 July, 25 August, 22 September and 20 October. In the laboratory, the contents were sieved and stored in containers with 70% ethanol until identification could take place. The pitfall trap catches were supplemented with a small number of invertebrates, mainly beetles, collected by hand between 12 March and 3 September. All specimens are retained in the collections at the James Hutton Institute and available for further study if required.

The invertebrate conservation designations referred to in this report are listed in Table 2. Furthermore, the data was analysed using the Pantheon database (Webb et al. 2018). Pantheon is a database tool developed by Natural England and the Centre for Ecology & Hydrology (UKCEH) to analyse invertebrate sample data. It classifies invertebrate species by their association with broad habitats and as part of Specific Assemblage Types (SATs) that are characterised by ecologically restricted species. The analysis determines whether the SATs represented in a sample are sufficiently species-rich to reach favourable condition.

**Table 1.** Location of pitfall traps at Findhorn 2025.

Trap number	Grid reference	Habitat	Sub-habitat
15	NJ 05075 64075	Sand/shingle	
17	NJ 05040 64004	Sand/shingle	
36	NJ 04986 64107	Sand/shingle	
20	NJ 04959 63801	Lichen-rich dune heath	
21	NJ 04971 63810	Lichen-rich dune heath	
22	NJ 04938 63880	Lichen-rich dune heath	
4	NJ 04938 64105	Dune heath edge	
14	NJ 05098 64061	Dune heath edge	
16	NJ 05060 64060	Dune heath edge	
12	NJ 06088 64487	Dune heath	
18	NJ 04778 63904	Dune heath	
33	NJ 06049 64509	Dune heath	
35	NJ 04771 63933	Dune heath	
38	NJ 06098 64550	Dune heath	
39	NJ 04910 64154	Dune heath	
13	NJ 05752 64181	Dune grassland	
25	NJ 05687 64163	Dune grassland	
26	NJ 05940 64031	Dune grassland	
19	NJ 04921 63968	Gorse	
23	NJ 04903 63969	Gorse	
24	NJ 04878 63980	Gorse	
10	NJ 05378 64039	Woodland	Deciduous
31	NJ 05361 64028	Woodland	Deciduous
11	NJ 05635 64104	Woodland	Pine plantation
32	NJ 05618 64092	Woodland	Pine plantation

**Table 2.** Invertebrate conservation designations.

Abbreviation	Designation	Definition
NT	Near Threatened	A species is Near Threatened (NT) when it has been evaluated against the criteria but does not qualify for Critically Endangered, Endangered or Vulnerable now, but is close to qualifying for or is likely to qualify for a threatened category in the near future. Species can be categorized as NT for Great Britain (GB) or globally (in this report written as NT or global NT).
LC	Least Concern	
NS	Nationally Scarce	Species which are only found in between 16 and 100 hectads in GB. Also termed Nationally Notable.
Local		A species is said to be local if its distribution is restricted to certain areas of GB. This status is assigned based on information obtained from recording schemes or literature.

### 3. RESULTS

#### 3.1 Summary of findings

More than 3,929 invertebrates were identified from 16 orders, of which 2,031 invertebrates were identified to 140 species including 80 species of Coleoptera (Table 3; Appendix 1). Eight of these species have a conservation (or Local) designation. The mean number of beetles per trap was highest for dune heath and gorse habitats and lowest for bare sand/shingle and woodland. Species richness (number of species) was highest for dune heath and woodland and lowest for bare sand/shingle, however bare sand/shingle supported specialist species not found elsewhere (see sections 3.4-3.5). The overall abundance of beetles peaked in September, but species richness was higher in July and August.

#### 3.2 Species with conservation status

Eight species with a conservation status or Local distribution were found during the pitfall trap surveys. These included the Nationally Scarce and endemic dung beetle *Psammoporus insularis* which was only described as a species new to science in 2006. Only a single specimen was found on the edge of dune heath (trap 14). This species was previously recorded at Findhorn in 2007, possibly in a similar area though the 2007 record is only at a 1 km resolution. This beetle has more commonly been associated with exposed riverine sediments with only a few records from dune systems.

The pill beetle *Morychus aeneus* has a very scattered distribution across Scotland and northern England and is associated with sandy habitats. Again, only a single specimen was found in the dune heath bordering the beach (trap 33). The dung beetle *Trypocopris vernalis*, associated with sandy soils in woodland and grassland, has a widespread distribution but is very Local and often rare. Multiple individuals of this beetle were found in the same location as the previous species, dune heath bordering the beach (traps 33, 38), but also in the plantation woodland (traps 11, 32). *Leiodes furva* is a Nationally Notable small round fungus beetle associated with sandy soils and sand dunes. A single specimen was found in grassland bordering gorse at the eastern side of the site (trap 13). The limited GB records suggest a coastal distribution. The sap-feeding beetle *Epuraea terminalis* is also Nationally Notable with a sparsity of records across the UK. A single specimen was found in deciduous woodland (trap 10).

*Drassyllus pusillus* is a spider associated with sandy habitats, which has a patchy and scattered distribution and is considered Local and uncommon. It was found in multiple traps and habitats across the site suggesting that Findhorn Hinterland supports a reasonable population of this species. Another Local species is the lacebug *Acalypta carinata* with several individuals being found in the gorse area (traps 23, 24). It feeds on moss on rotting wood. The Hairy Wood Ant *Formica lugubris* is not considered threatened in the UK but is IUCN listed as Near Threatened. This species was widely distributed across the site though particularly in areas with longer vegetation and close to gorse or trees.

#### 3.3 New species for vice-county

A number of species appear to be new records for Moray (vice county 95). This includes two species with a conservation/Local status - *Acalypta carinata* and *Leiodes furva*. The only other known Scottish site for *Leiodes furva* is Tentsmuir in Fife where it was recorded in 1960 and again in 1981. The other new vice county records are:

- *Apion haematodes* - a widespread and generally common species associated with Sheep's Sorrel (*Rumex acetosella*) on which the larvae feed. It is possibly under recorded due to its small size.

**Table 3.** Species recorded from Findhorn Hinterland, 2025. Abundance is categorized as rare = single specimen, occasional = 2-9 specimens, frequent = 10-99 specimens, abundant = >100 specimens.

Order	Family	Species	Common name	Authority	Abundance at Findhorn	Conservation status	
Araneae	Agelenidae	<i>Eratigena</i> sp.			Rare		
	Amaurobiidae	<i>Amaurobius</i> sp.			Occasional		
	Araneidae	<i>Araneus diadematus</i>	Garden Spider	Clerck, 1757	Rare	LC	
	Clubionidae	<i>Clubiona</i> sp.			Rare		
	Gnaphosidae	<i>Drassyllus pusillus</i>			(C.L. Koch, 1833)	Occasional	LC; Local
		<i>Haplodrassus signifer</i>			(C.L. Koch, 1839)	Occasional	LC
		<i>Micaria pulicaria sens. str.</i>			(Sundevall, 1831)	Occasional	
	Linyphiidae	<i>Zelotes</i> sp.				Occasional	
		<i>Agyneta</i> sp.				Occasional	
		<i>Bathyphantes</i> sp.				Rare	
		<i>Erigone</i> sp.				Occasional	
		<i>Tenuiphantes tenuis</i>			(Blackwall, 1852)	Frequent	LC
	Liocranidae	<i>Walckenaeria</i> sp.				Occasional	
		<i>Agroeca brunnea</i>			(Blackwall, 1833)	Occasional	LC
		<i>Agroeca proxima</i>			(O.P.-Cambridge, 1871)	Rare	LC
	Lycosidae	<i>Arctosa perita</i>			(Latreille, 1799)	Frequent	LC
		<i>Pardosa</i> sp.				Frequent	
		<i>Trochosa ruricola</i>			(De Geer, 1778)	Frequent	LC
		<i>Trochosa terricola</i>			Thorell, 1856	Frequent	LC
	Salticidae	<i>Heliophanus flavipes</i>			(Hahn, 1832)	Occasional	LC
<i>Neon reticulatus</i>				(Blackwall, 1853)	Rare	LC	
Tetragnathidae	<i>Pachygnatha degeeri</i>			Sundevall, 1830	Rare	LC	
Theridiidae	<i>Asagena phalerata</i>			(Panzer, 1801)	Frequent	LC	
Thomisidae	<i>Ozyptila trux</i>			(Blackwall, 1846)	Rare	LC	
	<i>Xysticus cristatus</i>		Common Crab Spider	(Clerck, 1757)	Rare	LC	
Coleoptera	Apionidae	<i>Apion haematodes</i>		Kirby, 1808	Occasional		
		<i>Betulapion simile</i>	Birch Catkin Weevil	(Kirby, 1811)	Occasional		
	Byrrhidae	<i>Morychus aeneus</i>			(Fabricius, 1775)	Rare	LC; NS

Cantharidae	<i>Byrrhus fasciatus</i>	Banded Pill-beetle	(Forster, 1771)	Rare	LC
	<i>Malthodes</i> sp.			Rare	
	<i>Rhagonycha fulva</i>		(Scopoli, 1763)	Rare	LC
Carabidae	<i>Rhagonycha lignosa</i>		(Müller, O.F., 1764)	Rare	LC
	<i>Amara lunicollis</i>		Schiødte, 1837	Rare	LC
	<i>Bradycellus verbasci</i>		(Duftschmid, 1812)	Occasional	LC
	<i>Calathus erratus</i>		(Sahlberg, C.R., 1827)	Frequent	LC
	<i>Calathus fuscipes</i>		(Goeze, 1777)	Abundant	LC
	<i>Calathus melanocephalus</i>		(Linnaeus, 1758)	Frequent	LC
	<i>Calathus mollis</i>		(Marsham, 1802)	Frequent	LC
	<i>Carabus nemoralis</i>		Müller, O.F., 1764	Occasional	LC
	<i>Carabus problematicus</i>		Herbst, 1786	Frequent	LC
	<i>Cychrus caraboides</i>	Snail Hunter	(Linnaeus, 1758)	Occasional	LC
	<i>Dicheirotichus placidus</i>		(Gyllenhal, 1827)	Rare	LC
	<i>Harpalus rufipes</i>	Strawberry Seed Beetle	(De Geer, 1774)	Occasional	LC
	<i>Leistus rufomarginatus</i>		(Duftschmid, 1812)	Rare	LC
	<i>Leistus terminatus</i>		(Panzer, 1793)	Occasional	LC
	Coccinellidae	<i>Nebria brevicollis</i>		(Fabricius, 1792)	Abundant
<i>Pterostichus madidus</i>		Black Clock	(Fabricius, 1775)	Abundant	LC
<i>Pterostichus niger</i>			(Schaller, 1783)	Frequent	LC
<i>Syntomus foveatus</i>			(Geoffroy in Fourcroy, 1785)	Occasional	LC
<i>Synuchus vivalis</i>			(Illiger, 1798)	Rare	LC
<i>Trechus obtusus</i>			Erichson, 1837	Occasional	LC
<i>Coccinella septempunctata</i>		7-spot Ladybird	Linnaeus, 1758	Occasional	
<i>Coccinella undecimpunctata</i>		11-spot Ladybird	Linnaeus, 1758	Occasional	
Cryptophagidae	<i>Antherophagus pallens</i>		(Linnaeus, 1758)	Occasional	
	<i>Cryptophagus</i> sp.			Frequent	
Curculionidae	<i>Micrambe ulicis</i>		(Stephens, 1830)	Abundant	
	<i>Euophryum confine</i>		(Broun, 1881)	Occasional	Non-native
	<i>Hylastes</i> sp.			Occasional	
	<i>Hylurgops palliates</i>		(Gyllenhal, 1813)	Rare	
	<i>Miarus campanulae</i>		(Linnaeus, 1767)	Occasional	
	<i>Philopedon plagiatum</i>	Marram Weevil	(Schaller, 1783)	Occasional	

	<i>Phloeotribus rhododactylus</i>		(Marsham, 1802)	Occasional	
	<i>Protopirapion atratum</i>		(Germar, 1817)	Rare	
	<i>Rhinoncus castor</i>		(Fabricius, 1792)	Occasional	
	<i>Strophosoma melanogrammum</i>	Nut Leaf Weevil	(Forster, 1771)	Occasional	
	<i>Strophosoma sus</i>	Heather Weevil	(Stephens, 1831)	Occasional	
Elateridae	<i>Athous haemorrhoidalis</i>		(Fabricius, 1801)	Rare	
	<i>Dalopius marginatus</i>		(Linnaeus, 1758)	Rare	
	<i>Melanotus villosus</i>		(Geoffroy in Fourcroy, 1785)	Rare	
Geotrupidae	<i>Trypocopriv vernalis</i>	Spring Dumbledor	(Linnaeus, 1758)	Occasional	LC; NS; Local
Helophoridae	<i>Helophorus brevipalpis</i>		Bedel, 1881	Occasional	
Latridiidae	<i>Corticaria gibbosa</i>		(Herbst, 1793)	Frequent	
Leiodidae	<i>Catops kirbyi</i>		(Spence, 1813)	Frequent	
	<i>Catops nigricans</i>		(Spence, 1813)	Occasional	
	<i>Leiodes furva</i>		(Erichson, 1845)	Rare	NN
	<i>Sciodrepoides fumatus</i>		(Spence, 1813)	Frequent	
	<i>Sciodrepoides watsoni</i>		(Spence, 1813)	Occasional	
Nitidulidae	<i>Epuraea marseuli</i>		Reitter, 1873	Rare	
	<i>Epuraea terminalis</i>		(Mannerheim, 1843)	Rare	NN
Scarabaeidae	<i>Psammoporus insularis</i>	Shingle Crawler	Pittino, 2006	Rare	NS; Endemic
	<i>Serica brunnea</i>	Brown Chafer	(Linnaeus, 1758)	Frequent	LC
Scraptiidae	<i>Anaspis regimbarti</i>		Schilsky, 1895	Rare	LC
Staphylinidae	<i>Aleochara bipustulata</i>		(Linnaeus, 1761)	Rare	
	<i>Anotylus maritimus</i>		Thomson, C.G., 1861	Rare	
	<i>Anthobium atrocephalum</i>		(Gyllenhal, 1827)	Rare	
	<i>Anthobium unicolor</i>		(Marsham, 1802)	Occasional	
	<i>Drusilla canaliculata</i>		(Fabricius, 1787)	Frequent	
	<i>Lathrobium</i> sp.			Rare	
	<i>Micropeplus staphylinoides</i>		(Marsham, 1802)	Rare	
	<i>Nicrophorus vespilloides</i>	Common Sexton Beetle	Herbst, 1783	Occasional	LC
	<i>Ocypus brunnipes</i>		(Fabricius, 1781)	Rare	
	<i>Ocypus olens</i>	Devils's Coach-horse	(Müller, O.F., 1764)	Occasional	
	<i>Olophrum piceum</i>		(Gyllenhal, 1810)	Frequent	
	<i>Oxytelus sculptus</i>		Gravenhorst, 1806	Rare	

		<i>Philonthus cognatus</i>		Stephens, 1832	Rare	
		<i>Phosphuga atrata</i>	Black Carrion Beetle	(Linnaeus, 1758)	Rare	
		<i>Quedius fumatus</i>		(Stephens, 1833)	Rare	
		<i>Quedius lateralis</i>		(Gravenhorst, 1802)	Rare	
		<i>Staphylinus dimidiaticornis</i>	Common Staphylinus	Gemminger, 1851	Occasional	
		<i>Stenichnus collaris</i>		(Müller, P.W.J. & Kunze, 1822)	Occasional	
		<i>Tachinus corticinus</i>		Gravenhorst, 1802	Occasional	LC
		<i>Tachinus laticollis</i>		Gravenhorst, 1802	Occasional	LC
		<i>Tachyporus chrysomelinus</i>		(Linnaeus, 1758)	Occasional	LC
		<i>Tasgius morsitans</i>		(Rossi, 1790)	Occasional	
	Tenebrionidae	<i>Lagria hirta</i>		(Linnaeus, 1758)	Rare	
Diptera	Dryomyzidae	<i>Dryomyza anilis</i>		Fallén, 1820	Frequent	
	Rhagionidae	<i>Rhagio lineola</i>	Small Fleck-winged Snipefly	Fabricius, 1794	Rare	LC
	Therevidae	<i>Thereva nobilitata</i>	Common Stiletto	(Fabricius, 1775)	Rare	LC
Hemiptera	Acanthosomatidae	<i>Elasmostethus interstinctus</i>	Birch Shieldbug	(Linnaeus, 1758)	Rare	LC
		<i>Anthocoris confusus</i>	Oak Flower Bug	Reuter, 1884	Rare	
	Cicadellidae	<i>Anaceratagallia venosa</i>		(Geoffroy in Fourcroy, 1785)	Rare	
		<i>Eupelix cuspidata</i>		(Fabricius, 1775)	Occasional	
		<i>Ulopa reticulata</i>		(Fabricius, 1794)	Rare	
	Lygaeidae	<i>Drymus brunneus</i>		(Sahlberg, 1848)	Frequent	
		<i>Kleidocerys resedae</i>	Birch Catkin Bug	(Panzer, 1797)	Rare	
		<i>Macrodema micropterum</i>		(Curtis, 1836)	Occasional	
		<i>Nysius thymi</i>		(Wolff, 1804)	Rare	
		<i>Scolopostethus decoratus</i>		Hahn, 1833)	Occasional	
		<i>Stygnocoris sabulosus</i>		(Schilling, 1829)	Occasional	
		<i>Trapezonotus desertus</i>		Seidenstücker, 1951	Rare	
	Miridae	<i>Mecomma ambulans</i>		(Fallén, 1807)	Occasional	
	Tingidae	<i>Acalypta carinata</i>		(Panzer, 1806)	Occasional	Local
		<i>Acalypta parvula</i>		(Fallén, 1807)	Frequent	
Hymenoptera	Apidae	<i>Andrena barbilabris</i>	Sandpit Mining Bee	(Kirby, 1802)	Rare	
		<i>Bombus terrestris</i>	Buff-tail Bumblebee	(Linnaeus, 1758)	Rare	
	Formicidae	<i>Formica fusca</i>	Dusky Ant	Linnaeus, 1758	Occasional	

		<i>Formica lemani</i>		Bondroit, 1917	Abundant	
		<i>Formica lugubris</i>	Hairy Wood Ant	Zetterstedt, 1838	Abundant	Global NT
		<i>Lasius niger</i>	Small Black Ant	(Linnaeus, 1758)	Abundant	
		<i>Myrmica ruginodis</i>		Nylander, 1846	Abundant	
		<i>Myrmica sabuleti</i>		Meinert, 1861	Abundant	
		<i>Myrmica scabrinodis</i>		Nylander, 1846	Occasional	
	Ichneumonidae	<i>Gelis proximus</i>		(Förster, 1850)	Rare	
	Pompilidae	<i>Arachnospila spissa</i>	Broad-faced Arachnospila	(Schiødte, 1837)	Occasional	
		<i>Priocnemis parvula</i>		Dahlbom, 1845	Occasional	
	Vespidae	<i>Vespula germanica</i>	German Wasp	(Fabricius, 1793)	Rare	
		<i>Vespula vulgaris</i>	Common Wasp	(Linnaeus, 1758)	Frequent	
Orthoptera	Acrididae	<i>Chorthippus brunneus</i>	Field Grasshopper	(Thunberg, 1815)	Occasional	LC
		<i>Myrmeleotettix maculatus</i>	Mottled Grasshopper	(Thunberg, 1815)	Occasional	LC
		<i>Omocestus viridulus</i>	Common Green Grasshopper	(Linnaeus, 1758)	Rare	LC

- *Antherophagus pallens* – a widespread but uncommon species with a predominately southern distribution. It is associated with bumblebee nests where the beetles feed on organic debris.
- *Miarus campanulae* – a weevil associated with bellflowers *Campanula*. It is widespread in England and Wales but with few records for Scotland.
- *Phloeotribus rhododactylus* – a bark beetle which is rarer in the northern part of its European range. It feeds mainly on Broom *Cytisus scoparius* (Fiala & Holuša, 2020).
- *Anaspis regimbarti* – a false flower beetle whose larvae develop on decaying wood. It is widespread in England and Wales but with only a few records for Scotland.
- *Corticicara gibbosa* - a common and widespread minute scavenger beetle in England and Wales but there are few records for Scotland. It is found in a wide range of habitats.
- *Aleochara bipustulata* – a rove beetle found in various habitats but particularly associated with cabbages where it feeds on cabbage root maggots (*Delia radicum*).
- *Oxytelus sculptus* – a rove beetle that is associated with decaying organic matter and was found in gorse at Findhorn (trap 19).
- *Staphylinus dimidiaticornis* – this rove beetle has a western distribution in the UK being found predominantly in south west England and north west Scotland.
- *Eupelix cuspidata* - a widespread but not common leafhopper, usually occurring in dry grassy areas.
- *Tachinus corticinus* – a rove beetle for which Findhorn would be the most northerly GB record.
- *Quedius fumatus* – a rove beetle associated mainly with woodland, with only a few scattered records across Scotland though more commonly recorded in England and Wales.
- *Sciodrepoides fumatus* – a carrion beetle, associated mainly with woodland, which has only a few records across northern Scotland including Aberdeenshire.
- *Gelis proximus* – a tiny parasitoid wasp which is common and widespread but under recorded.

Three additional species have few Scottish records but have been found at, or near, Findhorn previously. Findhorn is currently the only Scottish site for the large rove beetle *Tasgius morsitans*. It is found in a variety of habitats but often woodland. That it has not been recorded elsewhere in Scotland is curious. Another rove beetle *Anotylus maritimus* has been recorded from coastal locations including Lossiemouth Bay and the small carrion beetle *Catops kirbyi* has a few records from northern Scotland including Moray.

### 3.4 Habitat-associated species

Analysis by Pantheon scored the site in favourable condition for scrub heath and moorland, and unfavourable condition for scrub edge and bare sand and chalk, but these are all based on the <15 minimum species and therefore might not be reliable (Table 4). Of note is the rove beetle *Anotylus maritimus* which is a habitat specialist associated with sandy beaches.

**Table 4.** Total number of species assigned by Pantheon to habitat types. Species with a conservation designation are highlighted in **bold**.

Broad biotope	Habitat/specific assemblage type	Number of species	Species
Open habitats	Scrub heath & moorland	13	<b><i>Trypocopris vernalis</i></b> , <b><i>Formica lugubris</i></b> , <i>Agroeca proxima</i> , <i>Apion haematodes</i> , <i>Byrrhus fasciatus</i> , <i>Carabus problematicus</i> , <i>Harpalus rufipes</i> , <i>Protopirapion atratum</i> , <i>Strophosoma sus</i> , <i>Olophrum piceum</i> , <i>Ulopa</i>

Open habitats	Scrub edge	6	<i>reticulata</i> , <i>Macrodema micropterum</i> , <i>Scolopostethus decorates</i> <b><i>Formica lugubris</i></b> , <i>Agroeca brunnea</i> , <i>Agroeca proxima</i> , <i>Heliophanus flavipes</i> , <i>Protopirapion atratulum</i> , <i>Formica lemani</i>
Open habitats	Short sward & bare ground	7	<i>Arctosa perita</i> , <i>Calathus erratus</i> , <i>Calathus mollis</i> , <i>Miarus campanulae</i> , <i>Philopodon plagiatum</i> , <i>Nysius thymi</i> , <i>Acalypta parvula</i>
Open habitats	Sandy beach	1	<i>Anotylus maritimus</i>
Tree-associated	Decaying wood	4	<i>Acalypta carinata</i> , <i>Hylurgops palliates</i> , <i>Epuraea marseuli</i> , <i>Anaspis regimbarti</i>

### 3.5 Ecological notes on species

Further information is given below for all species listed in Table 3 which could be determined to species level and for which full records are given in Appendix 1.

#### ***Araneus diadematus*** Garden Spider

A large and extremely common and widespread species inhabiting a range of habitats such as gardens, grassland and woodland (Bee et al, 2020).

#### ***Drassyllus pusillus***

This spider prefers dry, open areas such as sandy heaths (Bee et al, 2020).

#### ***Haplodrassus signifer***

Common and widespread, this spider is found in grassland and heathland, often under stones or in moss or leaf litter. It has a preference for the drier areas of habitats (Bee et al, 2020).

#### ***Micaria pulicaria***

This spider is associated with open areas with short sparse vegetation. Although it does not predate ants, it does mimic some of the ants' behaviours (Harvey et al., 2002).

#### ***Tenuiphantes tenuis***

Widespread and common in the south but less frequent in Scotland. It is found in a variety of habitats but particularly grasslands, with a specific association with rabbit scraps in short turf (Bee et al, 2020).

#### ***Agroeca brunnea***

Generally found in leaf litter and low vegetation within woodland, but also in grassland and heathland (Bee et al, 2020). It has a scattered distribution across GB.

#### ***Agroeca proxima***

This spider prefers drier habitats with short vegetation and is one of the commonest species found on heathland (Bee et al, 2020).

#### ***Arctosa perita***

Widespread in coastal areas with a more scattered distribution inland. It favours dry, sandy soils on coastal dunes or heathland (Bee et al, 2020).

#### ***Trochosa ruricola***

A spider often found in damp grassland, marshes and ditches. Widespread in the south but less frequent in the north (Bee et al, 2020).

***Trochosa terricola***

A common and widespread species in a range of habitats including woodland, grassland and heathland though preferring drier areas (Bee et al, 2020).

***Heliophanus flavipes***

A spider found in a variety of habitats. It is widespread in the south of GB but also in north east Scotland (Bee et al, 2020).

***Neon reticulatus***

A widespread and fairly common spider, occurring in dry leaf litter in woodland or moss in bogs and marshes (Bee et al, 2020).

***Pachygnatha degeeri***

A common and widespread species of spider found in a range of habitats including woodland (Bee et al, 2020).

***Asagena phalerata***

A spider which is ant-like in appearance and found on dry grassland, heathland and dunes where it feeds on ants (Bee et al, 2020).

***Ozyptila trux***

This species has a widespread but scattered distribution and occurs in wet and dry grassland, heathland and woodland (Bee et al, 2020).

***Xysticus cristatus*** Common Crab Spider

Abundant and widespread in a wide variety of open habitats (Bee et al, 2020).

***Apion haematodes***

The larvae feed on Sheep's Sorrel, *Rumex acetosella*, causing galls. A common and widespread weevil found in a range of habitats including dunes and grassland (Duff, 2016).

***Betulapion simile***

A tiny weevil associated with birch *Betula spp.* and found in mixed and deciduous woodland (Duff, 2016).

***Morychus aeneus***

Widespread in northern England and Scotland but restricted to riparian habitats where both the larvae and adults feed on mosses. Although considered Nationally Scarce, this pill beetle is thought to be stable or increasing (Lane, 2021).

***Byrrhus fasciatus*** Banded-pill Beetle

Found on short turf on free-draining substrates including heathland and sand dunes where it possibly feeds on *Pleurocarpus* mosses (Lane, 2021).

***Rhagonycha fulva***

Our commonest species of soldier beetle. It can be found on flower heads where it is carnivorous on other flower-visiting insects (Duff, 2020). The carnivorous larvae are found in the soil.

***Rhagonycha lignosa***

A common and widespread soldier beetle. The adults are often found on Umbelliferae where they predate other insects (Duff, 2020). The larvae are soil dwelling carnivores.

***Amara lunicollis***

A widespread but not particularly common ground beetle associated with a range of habitats including gardens, grassland and heathland (Luff, 2007).

***Bradycellus verbasci***

Common and widespread but mainly near the coast. This ground beetle prefers sandy or gravelly soils (Luff, 2007).

***Calathus erratus***

A widespread ground beetle with a preference for dry, sandy soils with sparse vegetation (Luff, 2007). Often found in coastal areas.

***Calathus fuscipes***

A common and widespread ground beetle found in a variety of habitats with dry, open ground such as agricultural land, gardens, heathland and coastal dunes (Luff, 2007).

***Calathus melanocephalus***

Found in open habitats on moderately dry soil with grass or weedy vegetation (Luff, 2007). A common and widespread ground beetle.

***Calathus mollis***

This ground beetle is found on dry, sandy soils especially on the coast (Luff, 2007). It is locally common and widespread.

***Carabus nemoralis* 'Bronze Ground Beetle'**

Ubiquitous and frequently found in urban areas such as gardens, parks and agricultural land (Luff, 2007).

***Carabus problematicus***

Common and widespread predominantly on heathland and woodland but can be found in other habitats (Luff, 2007).

***Cychrus caraboides* Snail Hunter**

This ground beetle has specially adapted mouthparts to feed on snails in their shells. It is common and widespread mainly in woodland and moorland (Luff, 2007).

***Dicheirotichus placidus***

Usually found near water such as riverbanks, fens and marshes where it lives in damp leaf litter (Luff, 2007). A ground beetle which is common and widespread in the south east, but less so in Scotland.

***Harpalus rufipes* Strawberry Seed Beetle**

Ground beetle species which is widespread and common on agricultural soils, waste ground, grassland and gardens (Luff, 2007).

***Leistus rufomarginatus***

A ground beetle species that is spreading northwards. It is found in wooded or shaded habitats where it feeds on springtails (Luff, 2007). Though widespread, it is not particularly common.

***Leistus terminatus***

A specialist springtail feeder which is often abundant in damp, shaded conditions (Luff, 2007).

***Nebria brevicollis***

A very common and widespread ground beetle in almost all habitats except very wet or saline situations (Luff, 2007).

***Pterostichus madidus*** Black Clock

One of the most common and widespread ground beetles found in a range of habitats (Duff, 2020).

***Pterostichus niger***

A common ground beetle found in a range of habitats including damp woodland (Duff, 2020).

***Syntomus foveatus***

Usually in litter on dry, sandy soils with sparse vegetation (Luff, 2007). A ground beetle that is widespread in the south east but mainly confined to coastal areas in Scotland.

***Synuchus vivalis***

A ground beetle found on open, damp sand or gravel (Duff, 2007). It is widespread in England but with a more scattered distribution in Scotland.

***Trechus obtusus***

A common ground beetle found in a variety of habitats including open woodland, gardens and agricultural land (Duff, 2007).

***Coccinella septempunctata*** 7-spot Ladybird

Very common and widespread in a variety of habitats (Roy et al., 2013).

***Coccinella undecimpunctata*** 11-spot Ladybird

Usually found in coastal sand dunes or sandy situations inland (Roy et al., 2013).

***Antherophagus pallens***

A silken fungus beetle which is widespread with larvae feeding on detritus in bumblebee *Bombus* spp. nests and adults feeding on pollen and nectar (Duff, 2020).

***Micrambe ulicis***

A common and widespread silken fungus beetle wherever gorse is present (Duff, 2020). This beetle was particularly abundant at Findhorn Hinterland.

***Euophryum confine***

A non-native bark beetle introduced from New Zealand in 1930s which has been spreading ever since (Duff, 2016).

***Hylurgops palliatus***

A secondary bark beetle attacking older decaying trees and logs already inhabited by other bark beetles, mainly on Norway Spruce (*Picea abies*) (Duff, 2016).

***Miarus campanulae***

A tiny weevil associated with Harebells and other *Campanula* spp. on which the larvae feed causing galls (Duff, 2016). Widespread in England and Wales but with few records in Scotland.

***Philopodon plagiatum*** Marram Weevil

As its common name suggests, this weevil is mainly found on Marram Grass *Ammophila* spp. on sand dunes though both the larvae and adults can feed on a variety of grasses (Sivell et al. 2025). It can be very abundant.

***Phloeotribus rhododactylus***

A bark beetle feeding mainly on Broom *Cytisus scoparius* (Duff, 2016). It is limited by cooler winter temperatures and so rarer in northern Europe (Fiala & Holuša, 2020).

***Protopirapion atratum***

A weevil whose larvae feed on the flower buds of Gorse (*Ulex europaeus*), Broom (*Cystis scoparius*) and a few other species causing the flowers to fail to open and fall to the ground (Duff, 2016).

***Rhinoncus castor***

A minute seed weevil found in roots, stem or leaves of its hostplants Prostrate Knotweed (*Polygonum aviculare*) and Sheep's Sorrel (*Rumex acetosella*) (Walsh, 1954).

***Strophosoma melanogrammum*** Nut Leaf Weevil

A widespread and very common weevil found on a range of hostplants (Duff, 2016).

***Strophosoma sus*** Heather Weevil

As its common name suggests, this weevil is found in areas with *Calluna* (Duff, 2016).

***Athous haemorrhoidalis***

A common and widespread click beetle which feeds on a wide range of trees, shrubs and grasses (Duff, 2020). Mainly found in grasslands and woodlands.

***Dalopius marginatus***

A common click beetle in a wide range of habitats, often on trees. The larvae are root feeders (Duff, 2020).

***Melanotus villosus***

Primarily a woodland species where the larvae feed on decaying wood, especially pine (*Pinus sylvestris*) (Duff, 2020). A widespread click beetle across England but less so in Scotland where it is often replaced by *M. castanipes*.

***Trypocopris vernalis*** Spring Dumbledor

A dung beetle associated with the dung of sheep, cattle, horses and foxes (Duff, 2020). It is found mainly in open areas but occasionally in woodland.

***Helophorus brevipalpis***

A common water beetle found in stagnant small pools or beside slower running water (Duff, 2012).

***Corticaria gibbosa***

Common in England and Wales but less so in Scotland. This fungus beetle species is usually found in damp habitats where it feeds on decaying vegetation (Duff, 2020).

***Catops kirbyi***

A carrion beetle usually found in carrion, damp litter and mammal nests (Duff, 2012).

***Catops nigricans***

A carrion beetle found in woodland litter or in the nests and galleries of small mammals (Duff, 2012).

***Leiodes furva***

There are only a few widely dispersed records for this round fungus beetle in GB, all are coastal locations, and it seems to be rare across its European range. The beetle feeds on subterranean fungi (Duff, 2012).

***Sciodreporides fumatus***

This species shows a preference for wet woodland where it can be found in mammal burrows and bird nests feeding on carrion and fungi (Schilthuizen, 1990; Kilian, 2012).

***Sciodrepoides watsoni***

Found in mammal burrows, damp leaf litter and decaying organic matter where this fungus beetle feeds on carrion and fungi (Duff, 2012).

***Epuraea marseuli***

Adults feed on flowers (especially Umbelliferae) while the larvae are associated with decaying wood (Duff, 2020): Ash (*Fraxinus excelsior*), Alder (*Alnus glutinosa*) and Birch (*Betula* spp.) are known hosts (Lekoveckaitė et al., 2023).

***Epuraea terminalis***

Found under the bark of sappy dead oak *Quercus*, birch *Betula* and pine *Pinus* timber (Duff, 2020). It is a relict old forest species which is rare in England but widespread in the Scottish Highlands. It was first recognized in GB in 1972 (Alexander, 2002).

***Psammoporus insularis*** Shingle Crawler

Usually associated with exposed riverine sediments with few records on sand dunes (Macadam, 2023). One of only a few endemic invertebrates in GB.

***Serica brunnea*** Brown Chafer

Found in sandy or chalky places where it can sometimes be very abundant (Duff, 2020).

***Anaspis regimbarti***

Widespread in England and Wales but with few records from Scotland. This false flower beetle can be found at flowers such as Hawthorn (*Crataegus* sp.) while the larvae develop in the decaying wood of Birch (*Betula* spp.), Oak (*Quercus* spp.), Larch (*Larix* spp.) and several other species (Barclay & Telnov., 2025).

***Aleochara bipustulata***

A rove beetle which is a parasite of Cabbage Root Fly but they will also eat carrion and dung. Prefers open habitats (Duff, 2024).

***Anotylus maritimus***

This habitat specialist rove beetle is only found in coastal habitats living among seaweed and detritus (Frank & Ahn, 2011).

***Anthobium atrocephalum***

This rove beetle species is mainly found in litter or moss in woodland, or in the carpophores of fungi (Duff, 2024).

***Anthobium unicolor***

This rove beetle is mainly found in litter or understory vegetation within woodlands (Duff, 2024).

***Drusilla canaliculata***

A specialist ant-feeding rove beetle. It is found in a wide variety of habitats under stones, in litter, moss or organic debris (Duff, 2024).

***Micropeplus staphylinoides***

A small rove beetle found in a range of habitats including deciduous woodland, grassland and sand dunes (Duff, 2024).

***Nicrophorus vespilloides*** Common Sexton Beetle

Found on carrion and sometimes decaying fungi (Duff, 2012).

***Ocypus brunripes***

This rove beetle can be common in a variety of habitats including woodland, often under logs or stones (Duff, 2024). Like most members of its genus, it is a generalist predator.

***Ocypus olens*** Devil's Coach-horse

A large and fast-moving predator which feeds on a range of invertebrates. It occupies grassland, woodland, hedgerows and urban habitats (Duff, 2024).

***Olophrum piceum***

A small rove beetle found in leaf litter often in woodlands and heathlands (Duff, 2024).

***Oxytelus sculptus***

A rove beetle associated with damp situations where it can be found in dung, carrion and fruiting bodies (Duff, 2024).

***Philonthus cognatus***

A widespread and common rove beetle occurring on damp soils in a variety of habitats such as woodland and heathland (Duff, 2024).

***Phosphuga atrata*** Black Carrion Beetle or Common Snail-hunter

This species predaes snails but will also eat other invertebrates and carrion (Duff, 2024). It secretes a yellow defensive liquid when threatened. Widespread in woodland, heathland and grassland.

***Quedius fumatus***

This rove beetle species can be found in deciduous woodland, in leaf litter, other organic debris, under bark or in rotten logs (Legner & Moore, 1977; Owen, 2000).

***Quedius lateralis***

Rove beetle associated with well rotten bark and logs in woodland, particularly pine woods (Duff, 2024).

***Staphylinus dimidiaticornis*** Common Staphylinus

This large rove beetle prefers moist humid habitats such as damp grassland. A generalist predator feeding on a range of smaller invertebrates (Duff, 2024).

***Stenichnus collaris***

A small ant-like rove beetle found in leaf litter in a range of habitats including woodland, grassland and heathland (Duff, 2024).

***Tachinus corticinus***

A crab-like rove beetle found in damp leaf litter, moss and organic debris in woodland and grassland (Duff, 2024).

***Tachinus laticollis***

This rove species is found in a range of habitats, but particularly woodland (Duff, 2024).

***Tachyporus chrysomelinus***

Found in leaf litter, moss and plant debris where it feeds on small invertebrates especially aphids (Duff, 2024).

***Tasgius morsitans***

A large rove beetle found in a variety of habitats but especially woodland (Duff, 2024).

***Lagria hirta***

The larvae of this darkling beetle feed on decaying plant material while the adults feed on nectar and pollen (Duff, 2020). It is a southern species which is widespread across England and Wales but sparsely scattered across Scotland where it is mainly associated with coastal areas. It has a preference for short turf on sandy soils.

***Dryomyza anilis***

A common and widespread fly particularly in moist, shaded habitats and associated with decaying vegetation, fungi and dung.

***Rhagio lineola*** Small Fleck-winged Snipefly

A common and widespread snipefly. The adults feed on smaller flies whilst the larvae feed on soft bodied invertebrates in the soil.

***Thereva nobilitata*** Common Stiletto

Adults feed on nectar whilst the larvae are omnivorous feeding on decaying plant matter and small invertebrates in the soil. A common and widespread fly.

***Elasmotethus interstinctus*** Birch Shieldbug

Mainly associated with birch but will also feed on hazel and aspen (Southwood & Leston, 1959). Common and widespread in deciduous woodland.

***Anthocoris confusus*** Oak Flower Bug

Common and widespread being found on a range of deciduous trees including Oak (*Quercus* spp.) (Southwood & Leston, 1959).

***Anaceratagallia venosa***

A leafhopper primarily associated with dry grasslands (Southwood & Leston, 1959). Common and widespread in England but relatively few records for Scotland.

***Eupelix cuspidata***

A leafhopper associated with dry, grassy areas. It is widespread but not common (Southwood & Leston, 1959).

***Ulopa reticulata***

Small leafhopper feeding on *Calluna* and *Erica*. Widespread and often common on heathlands (Southwood & Leston, 1959).

***Drymus brunneus***

A seed bug which feeds on mosses and lichens. Prefers damp conditions and is often found in moist leaf litter (Southwood & Leston, 1959).

***Kleidocerys resedae*** Birch Catkin Bug

Common throughout southern GB but less so in the north. A seed bug which feeds mainly on birch but also occasionally on alder (Southwood & Leston, 1959).

***Macrodema micropterum***

A tiny seed bug found on heathland where it feeds on *Erica* spp. (Southwood & Leston, 1959).

***Nysius thymi***

This seed bug is associated with bare ground and is often found in coastal areas. It feeds on *Thymus* and plants of the Compositae (Southwood & Leston, 1959; Woodroffe, 1963). It has a scattered distribution across GB.

***Scolopostethus decoratus***

A common and widespread ground bug, associated with *Calluna* (Southwood & Leston, 1959).

***Stygnocoris sabulosus***

A seed bug which is common and widespread in dry habitats, especially those with sandy or chalky soils (Southwood & Leston, 1959).

***Trapezonotus desertus***

A common and widespread ground bug species found mainly on grassland and heathland (Southwood & Leston, 1959).

***Mecomma ambulans***

A plant bug associated with woodland edges where it is found on a range of herbaceous plants such as nettles (*Urtica dioica*) (Southwood & Leston, 1959).

***Acalypta carinata***

A tiny lacebug associated with moss on rotting logs (Southwood & Leston, 1959).

***Acalypta parvula***

This lacebug is found on short moss on dry soils (Southwood & Leston, 1959).

***Andrena barbilabris* Sandpit Mining Bee**

A mining bee which is associated with loose sandy soils. It is widespread but less common in the north (Falk, 2018).

***Bombus terrestris* Buff-tail Bumblebee**

One of our most common and widespread bumblebees occurring in a range of habitats such as parks and gardens (Falk, 2018). It has a more coastal distribution in Scotland but its range is expanding.

***Formica fusca* Dusky Ant**

Found in a variety of habitats including woodland, meadows and urban areas (Lebas et al., 2016). It is less common in north east Scotland than *F. lemani*.

***Formica lemani***

This ant is found in a variety of habitats including heathland. It gradually replaces *F. fusca* with altitude (Lebas et al., 2016).

***Formica lugubris* Hairy Wood Ant**

Primarily found in upland woodland but more of an edge specialist than other wood ant species, extending into more open heathland in some situations (Skinner & Jarman, 2025).

***Lasius niger* Small Black Ant (Lebas et al., 2016).**

A very common ant particularly associated with urban areas including parks and gardens (Skinner & Jarman, 2025).

***Myrmica ruginodis***

A common red ant found in a wide range of open and forested habitats on damp ground (Lebas et al., 2016).

***Myrmica sabuleti***

A locally common ant favouring warm, dry habitats such as coastal sand dunes and sandy heaths (Lebas et al., 2016).

***Myrmica scabrinodis***

A common and widespread ant found in a variety of habitats though it tends to avoid very dry areas, woodland or human habitations (Skinner & Jarman, 2025).

***Gelis proximus***

A wingless parasitoid wasp with a very broad host range (Shaw et al. 2021). It is common and widespread but likely under recorded due to its small size.

***Arachnospila spissa***

A parasitoid wasp predated wolf spiders and found on a range of habitats including open woodland, heathland and coastal dunes (Day, 1988).

***Priocnemis parvula***

Predominately a species of sandy soils, heathland and coastal areas. This spider wasp is found throughout GB but most frequent in the south east (Day, 1988).

***Vespula germanica*** German Wasp

A common and widespread species nesting underground and sometimes above ground (Davies & Watts, 2025).

***Vespula vulgaris*** Common Wasp

A common and widespread wasps nesting in houses, outbuildings and sometimes underground (Davies & Watts, 2025).

***Chorthippus brunneus*** Field Grasshopper

A common and widespread species, feeding on grasses in almost any habitat (Sutton & Beckmann, 2026).

***Myrmeleotettix maculatus*** Mottled Grasshopper

A grasshopper found in grassland with patches of bare ground and short turf (Sutton & Beckmann, 2026).

***Omocestus viridulus*** Common Green Grasshopper

One of the most common grasshoppers, widespread in grasslands (Sutton & Beckmann, 2026).

## 4. Discussion and conclusion

A total of 140 invertebrate species including 80 beetle (Coleoptera) species were recorded on Findhorn Hinterland between March and October 2025. Though there have been limited systematic surveys of coastal beetles in Scotland, this number compares favourably with other areas (e.g. see Redgate 1981; Macadam et al. 2012). A large number of new vice county records have been made demonstrating an under recording of coastal habitats in Moray and north east Scotland generally.

During this survey several Nationally Scarce species were recorded including the pill beetle *Morychus aeneus*, the dung beetle *Trypocopris vernalis*, the round fungus beetle *Leiodes furva*, the sap-feeding beetle *Epuraea terminalis*, the endemic dung beetle *Psammoporus insularis*. The latter species was known from Findhorn but has not been recorded for nearly 20 years so this survey confirms its continued presence. The Findhorn Hinterland Trust are keen to showcase 'star' species and this beetle would certainly fit their criteria.

The survey results showed a fauna is representative of the successional gradient which exists from bare sand and shingle through to woodland. Although there were several species present which are frequently found in coastal situations, there were few truly coastal specialists, an exception being the rove beetle *Anotylus maritimus* which is closely associated with organic debris on fine sand and shingle. This species along with other coastal specialists can be negatively impacted by trampling from recreational use, the removal of organic detritus, and erosion. The results of the Pantheon analysis highlighted the importance of open habitats on Findhorn Hinterland with 87% of the highly specialized species identified in the analysis associated with open habitats. Although several species were found which use woodland, the majority of these will also use other habitats; only four specialist, highly associated tree species were found.

Species that may have been expected in this location and these habitats, such as the Dune Chafer (*Anomala dubia*) or Northern Small Scarab (*Aegialia arenaria*), were not found during this survey. The main sampling period of July – October would not have been a factor in missing species such as these, but it may have resulted in other species being missed. Likewise, although pitfall traps are a cost-effective technique for sampling over a long period of time, they are of limited use in bare sand where they quickly become infilled. A follow-up survey during May and June and utilizing additional sampling techniques such as sieving litter and bare sand/shingle are recommended to potentially capture a larger suite of species.

In conclusion, Findhorn Hinterland is clearly an important mosaic of habitats for invertebrates, particularly those associated with open habitats. It supports a wide range of species including several rarities and many potentially under recorded species. The exceptionally high abundance of the common gorse specialist *Micrambe ulicis* reflects the extent of dense scrub on the dunes in some areas. The targeted, small-scale, removal of gorse to create bare sand and shingle recommended in the Findhorn Hinterland Trust's Biodiversity Action Plan is supported, with most gorse being left intact, supporting less common gorse specialists.

## 5. REFERENCES

- Alexander, K.N.A. (2002) The invertebrates of living & decaying timber in Britain and Ireland – a provisional annotated checklist. English Nature Research Report No. 467.
- Armstrong, E. and Holloway, G.J. (2018). Coleoptera of Dawlish Warren Nature Reserve including a comparison of dry pitfall trapping with shoreline sampling, Bioscience Horizons: The International Journal of Student Research, 11: hzy017 [doi:10.1093/biohorizons/hzy017](https://doi.org/10.1093/biohorizons/hzy017)
- Barclay, M.V.L. and Telnov, D. (2025). The genome sequence of the false flower beetle, *Anaspis regimbarti* Schilsky, 1895. *Wellcome Open Research*, 2025, 10: 85.
- Bee, L., Oxford, G, and Smith, H, (2020). Britain's spiders. Princeton University Press. Duff, A.G. (2012) Beetles of Britain and Ireland. Volume 1: Sphaeriusidae to Silphidae. A.G. Duff (Publishing).
- Buglife. (2019). Notable invertebrates associated with coastal sand dunes. Published online at <https://cdn.buglife.org.uk/2019/07/0820Notable20invertebrates20associated20with20coastal20sand20dunes.pdf>
- Davies, R. and Watts, O. (2025). Social wasps of Britain and Ireland. Field Studies Council.
- Day, M.C. (1988). Spider wasps. RES handbooks for the identification of British insects. Volume 6, part 4. Royal Entomological Society.
- Duff, A.G. (2012). Beetles of Britain and Ireland. Volume 1: Sphaeriusidae to Silphidae. A.G. Duff Publishing.
- Duff, A.G. (2016). Beetles of Britain and Ireland. Volume 4: Cerambycidae to Curculionidae. A.G. Duff Publishing.
- Duff, A.G. (2020). Beetles of Britain and Ireland. Volume 3: Geotrupidae to Scaptiidae. A.G. Duff Publishing.
- Duff, A.G. (2024). Beetles of Britain and Ireland. Volume 2: Staphylinidae. Field Studies Council.
- Falk, S. (2018). Field guide to the bees of Great Britain and Ireland. Bloomsbury Wildlife (UK).
- Fiala, T. and Holuša, J. (2020). The Bark Beetle *Phloeotribus rhododactylus* (Coleoptera: Curculionidae) has a stable range in Europe. *Insects* 11(12): 856. doi: [10.3390/insects11120856](https://doi.org/10.3390/insects11120856)
- Frank, J.H. and Ahn, K-J. (2011) Coastal Staphylinidae (Coleoptera): A worldwide checklist, biogeography and natural history. *Zookeys*, 107: 1-98. doi: 10.3897/zookeys.107.1651
- Harvey, P.R., Nellist, D.R. and Telfer, M.G. (eds). (2002). Provisional atlas of British spiders (Arachnida, Araneae), Volumes 1 & 2. Huntingdon: Biological Records Centre.
- Howe, M.A., Knight, G.T. and Clee, C. (2010). The importance of coastal sand dunes for terrestrial invertebrates in Wales and the UK, with particular reference to aculeate Hymenoptera (bees, wasps, ants). *Journal of Coastal Conservation*, 14: 91-102.
- Kilian, A. (2012) Phylogenetic Analysis of Camiarinae (Coleoptera: Leiodidae) Based on Larval Morphology. *Annales Zoologici (Warszawa)*, 62, 11-68

- Lane, S.A. 2021. A review of the status of the beetles of Great Britain – The Byrrhidae (Pill Beetles), Clambidae (Fringe-winged Beetles), Dascillidae (Soft-bodied Plant Beetles), Eucinetidae (Plate-thigh Beetles), Monotomidae (Root-eating Beetles), Phalacridae (Shining Flower Beetles) and Ptilodactylidae. *Species Status 17*. JNCC, Peterborough.
- Lebas, C., Galkowski, C., Blatrix, R. and Wegnez, P. (2016) *Ants of Britain and Europe*. Bloomsbury Wildlife.
- Legner, E.F. and Moore, I. (1977). Staphylinidae from under bark and at sap of trees, a preliminary survey of species possibly beneficial to forestry (Coleoptera). *The Great Lakes Entomologist*, 10(4): 173–177.
- Lekoveckaitė, A., Podėnienė, V. and Ferenca, R. (2023). Beetles (Coleoptera) in deciduous dead wood tree species trunks in Lithuania. *Biodiversity Data*, 11: e106132. doi: 10.3897/BDJ.11.e106132
- Luff, M.L. (2007). *The Carabidae (ground beetles) of Britain and Ireland, Volume 4, Part 2*. Royal Entomological Society.
- Macadam, C., Bairner, S. and Cathrine, C. (2012). Invertebrate survey of coastal vegetated shingle sites in Dumfries and Galloway. Technical Report for Scottish Natural Heritage.
- Macadam, C. (2023). Britain's endemic invertebrates. Buglife - The Invertebrate Conservation Trust, Peterborough.
- Owen, J.A. (2000). Coleoptera occurring underground at the roots of old trees. *Entomologist's Gazette 51*: 239–256.
- Philp, B. and Hamlin, I. (2016). Recent insect records from North Ayrshire's sand dune systems. *The Glasgow Naturalist*, 26(3): 74-79.
- Redgate N. (1981). Coleoptera of a north east Scotland sand dune system. *Entomologists' Monthly Magazine*, 117: 201-209.
- Roy, H.E., Brown, P.M.J., Comont, R.F., Poland, R.L., Sloggett, J.J., Allington, S. and Shields, C. (2013). *Ladybirds*. Pelagic Publishing.
- Schilthuizen, M. (1990) A revision of *Choleva agilis* (Illiger, 1798) and related species (Coleoptera: Staphylinoidae: Cholevinae). *Zoologische Mededelingen Leiden*, 64, 121-153.
- Shaw, M.R., Kan, P., Kan-van, B., Stirum, L. and Schwarz, M. (2021). The remarkable biology of a new species of *Gelis* Thunberg, 1827 (Ichneumonidae, Phygadeuontinae), a solitary endoparasitoid of fresh eggs of *Timarcha* (Coleoptera, Chrysomelidae). *Journal of Hymenoptera Research*, 82: 161-186. doi: [10.3897/jhr.82.64657](https://doi.org/10.3897/jhr.82.64657)
- Sivell, O., Levey, B., Barclay, M.V.L. and Sivell, D. (2025). The genome sequence of a weevil, *Philopodon plagiatum* (Schaller, 1783). *Wellcome Open Research* doi: [10.12688/wellcomeopenres.23784.1](https://doi.org/10.12688/wellcomeopenres.23784.1)
- Skinner, G.J. and Jarman, A.P. (2025). *Ants*. Pelagic Publishing.
- Southwood, T.R.E. and Leston, D. (1959). *Land and water bugs of the British Isles*. Frederick Warne Publishers Ltd.

Sutton, P. and Beckmann, B. (2026). Field guide to the grasshoppers and allies of Great Britain and Ireland. Bloomsbury Wildlife Guides.

Walsh, J.R. (1954) A coleopterist's handbook. Amateur Entomological Society.

Webb, J., Heaver, D., Lott, D., Dean, H.J., van Breda, J., Curson, J., Harvey, M.C., Gurney, M., Roy, D.B., van Breda, A., Drake, M., Alexander, K.N.A. and Foster, G. (2018). Pantheon - database version 3.7.6.

Woodroffe, G.E. (1963). Notes on some Hemiptera-Heteroptera from the Pembrokeshire coast. *Entomologist's Monthly Magazine* 99: 166.

## APPENDIX 1: All species records from Findhorn Hinterland 2025

<u>Date</u>	<u>Grid reference</u>	<u>Order</u>	<u>Taxon</u>	<u>No.</u>	<u>Stage</u>	<u>Sampling method</u>	<u>Collector</u>	<u>Determiner</u>
28/07/2025	NJ 04903 63969	Hemiptera	<i>Acalypta carinata</i>	1		Pitfall trap	C. Maclure	C. Maclure
25/08/2025	NJ 04878 63980	Hemiptera	<i>Acalypta carinata</i>	1		Pitfall trap	C. Maclure	C. Maclure
28/07/2025	NJ 06049 64509	Hemiptera	<i>Acalypta parvula</i>	1		Pitfall trap	C. Maclure	C. Maclure
25/08/2025	NJ 05618 64092	Hemiptera	<i>Acalypta parvula</i>	2		Pitfall trap	C. Maclure	C. Maclure
22/09/2025	NJ 04938 63880	Hemiptera	<i>Acalypta parvula</i>	2		Pitfall trap	C. Maclure	C. Maclure
22/09/2025	NJ 05635 64104	Hemiptera	<i>Acalypta parvula</i>	2		Pitfall trap	C. Maclure	C. Maclure
20/10/2025	NJ 04971 63810	Hemiptera	<i>Acalypta parvula</i>	1		Pitfall trap	C. Maclure	C. Maclure
20/10/2025	NJ 05618 64092	Hemiptera	<i>Acalypta parvula</i>	2		Pitfall trap	C. Maclure	C. Maclure
20/10/2025	NJ 05687 64163	Hemiptera	<i>Acalypta parvula</i>	1		Pitfall trap	C. Maclure	C. Maclure
20/10/2025	NJ 05752 64181	Hemiptera	<i>Acalypta parvula</i>	1		Pitfall trap	C. Maclure	C. Maclure
20/10/2025	NJ 05940 64031	Hemiptera	<i>Acalypta parvula</i>	1		Pitfall trap	C. Maclure	C. Maclure
20/10/2025	NJ 06049 64509	Hemiptera	<i>Acalypta parvula</i>	1		Pitfall trap	C. Maclure	C. Maclure
22/09/2025	NJ 06098 64550	Araneae	<i>Agroeca brunnea</i>	4		Pitfall trap	C. Maclure	C. Maclure
20/10/2025	NJ 04938 64105	Araneae	<i>Agroeca brunnea</i>	1		Pitfall trap	C. Maclure	C. Maclure
20/10/2025	NJ 06049 64509	Araneae	<i>Agroeca proxima</i>	1		Pitfall trap	C. Maclure	C. Maclure
22/09/2025	NJ 05075 64075	Coleoptera	<i>Aleochara bipustulata</i>	1	Adult	Pitfall trap	C. Maclure	C. Maclure
28/07/2025	NJ 06049 64509	Coleoptera	<i>Amara lunicollis</i>	1	Adult	Pitfall trap	C. Maclure	C. Maclure
28/07/2025	NJ 05060 64060	Hemiptera	<i>Anaceratagallia venosa</i>	1		Pitfall trap	C. Maclure	C. Maclure
16/07/2025	NJ 06 SE	Coleoptera	<i>Anaspis regimbarti</i>	1	Adult	Hand collection	A. Featherstone	C. Maclure
25/08/2025	NJ 04971 63810	Hymenoptera	<i>Andrena barbilabris</i>	1	Adult	Pitfall trap	C. Maclure	J. Stockan
25/08/2025	NJ 05040 64004	Coleoptera	<i>Anotylus maritimus</i>	4	Adult	Pitfall trap	C. Maclure	C. Maclure
13/07/2025	NJ 06 SE	Coleoptera	<i>Antherophagus pallens</i>	1	Adult	Hand collection	A. Featherstone	C. Maclure
28/07/2025	NJ 05378 64039	Coleoptera	<i>Antherophagus pallens</i>	1	Adult	Pitfall trap	C. Maclure	C. Maclure
25/08/2025	NJ 05378 64039	Coleoptera	<i>Antherophagus pallens</i>	1	Adult	Pitfall trap	C. Maclure	C. Maclure
20/10/2025	NJ 05361 64028	Coleoptera	<i>Anthobium atrocephalum</i>	1	Adult	Pitfall trap	C. Maclure	C. Maclure

20/10/2025	NJ 04878 63980	Coleoptera	<i>Anthobium unicolor</i>	2	Adult	Pitfall trap	C. Maclure	C. Maclure
20/10/2025	NJ 05378 64039	Coleoptera	<i>Anthobium unicolor</i>	1	Adult	Pitfall trap	C. Maclure	C. Maclure
20/10/2025	NJ 06049 64509	Coleoptera	<i>Anthobium unicolor</i>	1	Adult	Pitfall trap	C. Maclure	C. Maclure
20/10/2025	NJ 06088 64487	Coleoptera	<i>Anthobium unicolor</i>	1	Adult	Pitfall trap	C. Maclure	C. Maclure
20/10/2025	NJ 06098 64550	Coleoptera	<i>Anthobium unicolor</i>	5	Adult	Pitfall trap	C. Maclure	C. Maclure
10/08/2025	NJ 06 SE	Hemiptera	<i>Anthocoris confusus</i>	1		Hand collection	A. Featherstone	C. Maclure
25/08/2025	NJ 04959 63801	Hymenoptera	<i>Arachnospila spissa</i>	1	Adult	Pitfall trap	C. Maclure	J. Stockan
20/10/2025	NJ 04771 63933	Araneae	<i>Araneus diadematus</i>	1		Pitfall trap	C. Maclure	C. Maclure
28/07/2025	NJ 04771 63933	Araneae	<i>Arctosa perita</i>	1		Pitfall trap	C. Maclure	C. Maclure
28/07/2025	NJ 04778 63904	Araneae	<i>Arctosa perita</i>	1		Pitfall trap	C. Maclure	C. Maclure
28/07/2025	NJ 05060 64060	Araneae	<i>Arctosa perita</i>	1		Pitfall trap	C. Maclure	C. Maclure
25/08/2025	NJ 04771 63933	Araneae	<i>Arctosa perita</i>	2		Pitfall trap	C. Maclure	C. Maclure
25/08/2025	NJ 04778 63904	Araneae	<i>Arctosa perita</i>	1		Pitfall trap	C. Maclure	C. Maclure
25/08/2025	NJ 04910 64154	Araneae	<i>Arctosa perita</i>	2		Pitfall trap	C. Maclure	C. Maclure
25/08/2025	NJ 04938 63880	Araneae	<i>Arctosa perita</i>	1		Pitfall trap	C. Maclure	C. Maclure
25/08/2025	NJ 05098 64061	Araneae	<i>Arctosa perita</i>	3		Pitfall trap	C. Maclure	C. Maclure
22/09/2025	NJ 04771 63933	Araneae	<i>Arctosa perita</i>	1		Pitfall trap	C. Maclure	C. Maclure
22/09/2025	NJ 05060 64060	Araneae	<i>Arctosa perita</i>	1		Pitfall trap	C. Maclure	C. Maclure
20/10/2025	NJ 04910 64154	Araneae	<i>Arctosa perita</i>	1		Pitfall trap	C. Maclure	C. Maclure
20/10/2025	NJ 04938 63880	Araneae	<i>Arctosa perita</i>	1		Pitfall trap	C. Maclure	C. Maclure
20/10/2025	NJ 04938 64105	Araneae	<i>Arctosa perita</i>	1		Pitfall trap	C. Maclure	C. Maclure
20/10/2025	NJ 05060 64060	Araneae	<i>Arctosa perita</i>	2		Pitfall trap	C. Maclure	C. Maclure
28/07/2025	NJ 04938 63880	Araneae	<i>Asagena phalerata</i>	1		Pitfall trap	C. Maclure	C. Maclure
28/07/2025	NJ 04959 63801	Araneae	<i>Asagena phalerata</i>	5		Pitfall trap	C. Maclure	C. Maclure
28/07/2025	NJ 05940 64031	Araneae	<i>Asagena phalerata</i>	1		Pitfall trap	C. Maclure	C. Maclure
25/08/2025	NJ 04959 63801	Araneae	<i>Asagena phalerata</i>	1		Pitfall trap	C. Maclure	C. Maclure
25/08/2025	NJ 04971 63810	Araneae	<i>Asagena phalerata</i>	1		Pitfall trap	C. Maclure	C. Maclure
25/08/2025	NJ 05752 64181	Araneae	<i>Asagena phalerata</i>	1		Pitfall trap	C. Maclure	C. Maclure
25/08/2025	NJ 05940 64031	Araneae	<i>Asagena phalerata</i>	1		Pitfall trap	C. Maclure	C. Maclure
22/09/2025	NJ 04938 63880	Araneae	<i>Asagena phalerata</i>	2		Pitfall trap	C. Maclure	C. Maclure

15/06/2025	NJ 06 SE	Coleoptera	<i>Athous haemorrhoidalis</i>	1	Adult	Hand collection	A. Featherstone	C. Maclure
02/07/2025	NJ 06 SE	Coleoptera	<i>Betulapion simile</i>	1	Adult	Hand collection	A. Featherstone	C. Maclure
12/07/2025	NJ 06 SE	Coleoptera	<i>Betulapion simile</i>	1	Adult	Hand collection	A. Featherstone	C. Maclure
28/07/2025	NJ 05378 64039	Hymenoptera	<i>Bombus terrestris</i>	1	Adult	Pitfall trap	C. Maclure	C. Maclure
28/07/2025	NJ 05060 64060	Coleoptera	<i>Bradycellus verbasci</i>	1	Adult	Pitfall trap	C. Maclure	C. Maclure
25/08/2025	NJ 04938 63880	Coleoptera	<i>Bradycellus verbasci</i>	1	Adult	Pitfall trap	C. Maclure	C. Maclure
28/07/2025	NJ 05060 64060	Coleoptera	<i>Byrrhus fasciatus</i>	1	Adult	Pitfall trap	C. Maclure	C. Maclure
28/07/2025	NJ 04771 63933	Coleoptera	<i>Calathus erratus</i>	6	Adult	Pitfall trap	C. Maclure	C. Maclure
28/07/2025	NJ 04938 63880	Coleoptera	<i>Calathus erratus</i>	1	Adult	Pitfall trap	C. Maclure	C. Maclure
28/07/2025	NJ 04938 64105	Coleoptera	<i>Calathus erratus</i>	3	Adult	Pitfall trap	C. Maclure	C. Maclure
28/07/2025	NJ 05060 64060	Coleoptera	<i>Calathus erratus</i>	5	Adult	Pitfall trap	C. Maclure	C. Maclure
28/07/2025	NJ 05075 64075	Coleoptera	<i>Calathus erratus</i>	1	Adult	Pitfall trap	C. Maclure	C. Maclure
28/07/2025	NJ 06088 64487	Coleoptera	<i>Calathus erratus</i>	2	Adult	Pitfall trap	C. Maclure	C. Maclure
25/08/2025	NJ 04771 63933	Coleoptera	<i>Calathus erratus</i>	1+	Adult	Pitfall trap	C. Maclure	C. Maclure
25/08/2025	NJ 04778 63904	Coleoptera	<i>Calathus erratus</i>	1+	Adult	Pitfall trap	C. Maclure	C. Maclure
25/08/2025	NJ 04910 64154	Coleoptera	<i>Calathus erratus</i>	1+	Adult	Pitfall trap	C. Maclure	C. Maclure
25/08/2025	NJ 04938 64105	Coleoptera	<i>Calathus erratus</i>	3	Adult	Pitfall trap	C. Maclure	C. Maclure
25/08/2025	NJ 05060 64060	Coleoptera	<i>Calathus erratus</i>	2	Adult	Pitfall trap	C. Maclure	C. Maclure
25/08/2025	NJ 05098 64061	Coleoptera	<i>Calathus erratus</i>	10	Adult	Pitfall trap	C. Maclure	C. Maclure
25/08/2025	NJ 06049 64509	Coleoptera	<i>Calathus erratus</i>	1+	Adult	Pitfall trap	C. Maclure	C. Maclure
25/08/2025	NJ 06088 64487	Coleoptera	<i>Calathus erratus</i>	1+	Adult	Pitfall trap	C. Maclure	C. Maclure
25/08/2025	NJ 06098 64550	Coleoptera	<i>Calathus erratus</i>	1+	Adult	Pitfall trap	C. Maclure	C. Maclure
22/09/2025	NJ 04771 63933	Coleoptera	<i>Calathus erratus</i>	1+	Adult	Pitfall trap	C. Maclure	C. Maclure
22/09/2025	NJ 04778 63904	Coleoptera	<i>Calathus erratus</i>	1+	Adult	Pitfall trap	C. Maclure	C. Maclure
22/09/2025	NJ 04910 64154	Coleoptera	<i>Calathus erratus</i>	9	Adult	Pitfall trap	C. Maclure	C. Maclure
22/09/2025	NJ 04938 63880	Coleoptera	<i>Calathus erratus</i>	2	Adult	Pitfall trap	C. Maclure	C. Maclure
22/09/2025	NJ 04938 64105	Coleoptera	<i>Calathus erratus</i>	4	Adult	Pitfall trap	C. Maclure	C. Maclure
22/09/2025	NJ 05060 64060	Coleoptera	<i>Calathus erratus</i>	2	Adult	Pitfall trap	C. Maclure	C. Maclure
20/10/2025	NJ 04771 63933	Coleoptera	<i>Calathus erratus</i>	9	Adult	Pitfall trap	C. Maclure	C. Maclure
20/10/2025	NJ 04910 64154	Coleoptera	<i>Calathus erratus</i>	4	Adult	Pitfall trap	C. Maclure	C. Maclure

28/07/2025	NJ 04778 63904	Coleoptera	<i>Calathus fuscipes</i>	6	Adult	Pitfall trap	C. Maclure	C. Maclure
28/07/2025	NJ 04938 63880	Coleoptera	<i>Calathus fuscipes</i>	6	Adult	Pitfall trap	C. Maclure	C. Maclure
28/07/2025	NJ 04959 63801	Coleoptera	<i>Calathus fuscipes</i>	2	Adult	Pitfall trap	C. Maclure	J. Stockan
28/07/2025	NJ 04986 64107	Coleoptera	<i>Calathus fuscipes</i>	1	Adult	Pitfall trap	C. Maclure	C. Maclure
28/07/2025	NJ 05098 64061	Coleoptera	<i>Calathus fuscipes</i>	3	Adult	Pitfall trap	C. Maclure	J. Stockan
28/07/2025	NJ 05687 64163	Coleoptera	<i>Calathus fuscipes</i>	6	Adult	Pitfall trap	C. Maclure	C. Maclure
28/07/2025	NJ 06049 64509	Coleoptera	<i>Calathus fuscipes</i>	9	Adult	Pitfall trap	C. Maclure	C. Maclure
28/07/2025	NJ 06088 64487	Coleoptera	<i>Calathus fuscipes</i>	1	Adult	Pitfall trap	C. Maclure	C. Maclure
28/07/2025	NJ 06098 64550	Coleoptera	<i>Calathus fuscipes</i>	1	Adult	Pitfall trap	C. Maclure	C. Maclure
25/08/2025	NJ 04771 63933	Coleoptera	<i>Calathus fuscipes</i>	1+	Adult	Pitfall trap	C. Maclure	C. Maclure
25/08/2025	NJ 04778 63904	Coleoptera	<i>Calathus fuscipes</i>	1+	Adult	Pitfall trap	C. Maclure	C. Maclure
25/08/2025	NJ 04910 64154	Coleoptera	<i>Calathus fuscipes</i>	1+	Adult	Pitfall trap	C. Maclure	C. Maclure
25/08/2025	NJ 04938 63880	Coleoptera	<i>Calathus fuscipes</i>	6	Adult	Pitfall trap	C. Maclure	C. Maclure
25/08/2025	NJ 04938 64105	Coleoptera	<i>Calathus fuscipes</i>	4	Adult	Pitfall trap	C. Maclure	C. Maclure
25/08/2025	NJ 04959 63801	Coleoptera	<i>Calathus fuscipes</i>	1+	Adult	Pitfall trap	C. Maclure	C. Maclure
25/08/2025	NJ 04971 63810	Coleoptera	<i>Calathus fuscipes</i>	1+	Adult	Pitfall trap	C. Maclure	C. Maclure
25/08/2025	NJ 05060 64060	Coleoptera	<i>Calathus fuscipes</i>	4	Adult	Pitfall trap	C. Maclure	C. Maclure
25/08/2025	NJ 05687 64163	Coleoptera	<i>Calathus fuscipes</i>	1+	Adult	Pitfall trap	C. Maclure	C. Maclure
25/08/2025	NJ 05752 64181	Coleoptera	<i>Calathus fuscipes</i>	1+	Adult	Pitfall trap	C. Maclure	C. Maclure
25/08/2025	NJ 06049 64509	Coleoptera	<i>Calathus fuscipes</i>	1+	Adult	Pitfall trap	C. Maclure	C. Maclure
25/08/2025	NJ 06088 64487	Coleoptera	<i>Calathus fuscipes</i>	1+	Adult	Pitfall trap	C. Maclure	C. Maclure
22/09/2025	NJ 04771 63933	Coleoptera	<i>Calathus fuscipes</i>	1+	Adult	Pitfall trap	C. Maclure	C. Maclure
22/09/2025	NJ 04778 63904	Coleoptera	<i>Calathus fuscipes</i>	1+	Adult	Pitfall trap	C. Maclure	C. Maclure
22/09/2025	NJ 04910 64154	Coleoptera	<i>Calathus fuscipes</i>	4	Adult	Pitfall trap	C. Maclure	C. Maclure
22/09/2025	NJ 04938 63880	Coleoptera	<i>Calathus fuscipes</i>	16	Adult	Pitfall trap	C. Maclure	C. Maclure
22/09/2025	NJ 04959 63801	Coleoptera	<i>Calathus fuscipes</i>	34	Adult	Pitfall trap	C. Maclure	C. Maclure
22/09/2025	NJ 04971 63810	Coleoptera	<i>Calathus fuscipes</i>	1+	Adult	Pitfall trap	C. Maclure	C. Maclure
22/09/2025	NJ 05060 64060	Coleoptera	<i>Calathus fuscipes</i>	25	Adult	Pitfall trap	C. Maclure	C. Maclure
22/09/2025	NJ 05687 64163	Coleoptera	<i>Calathus fuscipes</i>	10	Adult	Pitfall trap	C. Maclure	C. Maclure
22/09/2025	NJ 05752 64181	Coleoptera	<i>Calathus fuscipes</i>	2	Adult	Pitfall trap	C. Maclure	C. Maclure

22/09/2025	NJ 05940 64031	Coleoptera	<i>Calathus fuscipes</i>	6	Adult	Pitfall trap	C. Maclure	C. Maclure
22/09/2025	NJ 06049 64509	Coleoptera	<i>Calathus fuscipes</i>	2	Adult	Pitfall trap	C. Maclure	C. Maclure
20/10/2025	NJ 04771 63933	Coleoptera	<i>Calathus fuscipes</i>	5	Adult	Pitfall trap	C. Maclure	C. Maclure
20/10/2025	NJ 04778 63904	Coleoptera	<i>Calathus fuscipes</i>	35	Adult	Pitfall trap	C. Maclure	C. Maclure
20/10/2025	NJ 04910 64154	Coleoptera	<i>Calathus fuscipes</i>	1	Adult	Pitfall trap	C. Maclure	C. Maclure
20/10/2025	NJ 04938 63880	Coleoptera	<i>Calathus fuscipes</i>	10	Adult	Pitfall trap	C. Maclure	C. Maclure
20/10/2025	NJ 04959 63801	Coleoptera	<i>Calathus fuscipes</i>	6	Adult	Pitfall trap	C. Maclure	C. Maclure
20/10/2025	NJ 05060 64060	Coleoptera	<i>Calathus fuscipes</i>	2	Adult	Pitfall trap	C. Maclure	C. Maclure
20/10/2025	NJ 05687 64163	Coleoptera	<i>Calathus fuscipes</i>	4	Adult	Pitfall trap	C. Maclure	C. Maclure
20/10/2025	NJ 05940 64031	Coleoptera	<i>Calathus fuscipes</i>	3	Adult	Pitfall trap	C. Maclure	C. Maclure
20/10/2025	NJ 06049 64509	Coleoptera	<i>Calathus fuscipes</i>	2	Adult	Pitfall trap	C. Maclure	C. Maclure
28/07/2025	NJ 06049 64509	Coleoptera	<i>Calathus melanocephalus</i>	1+	Adult	Pitfall trap	C. Maclure	C. Maclure
28/07/2025	NJ 06098 64550	Coleoptera	<i>Calathus melanocephalus</i>	7	Adult	Pitfall trap	C. Maclure	C. Maclure
25/08/2025	NJ 05940 64031	Coleoptera	<i>Calathus melanocephalus</i>	1	Adult	Pitfall trap	C. Maclure	C. Maclure
25/08/2025	NJ 06049 64509	Coleoptera	<i>Calathus melanocephalus</i>	1+	Adult	Pitfall trap	C. Maclure	C. Maclure
25/08/2025	NJ 06088 64487	Coleoptera	<i>Calathus melanocephalus</i>	1+	Adult	Pitfall trap	C. Maclure	C. Maclure
25/08/2025	NJ 06098 64550	Coleoptera	<i>Calathus melanocephalus</i>	1+	Adult	Pitfall trap	C. Maclure	C. Maclure
22/09/2025	NJ 04778 63904	Coleoptera	<i>Calathus melanocephalus</i>	1	Adult	Pitfall trap	C. Maclure	C. Maclure
22/09/2025	NJ 05060 64060	Coleoptera	<i>Calathus melanocephalus</i>	1	Adult	Pitfall trap	C. Maclure	C. Maclure
20/10/2025	NJ 06049 64509	Coleoptera	<i>Calathus melanocephalus</i>	2	Adult	Pitfall trap	C. Maclure	C. Maclure
20/10/2025	NJ 06098 64550	Coleoptera	<i>Calathus melanocephalus</i>	1	Adult	Pitfall trap	C. Maclure	C. Maclure
28/07/2025	NJ 06049 64509	Coleoptera	<i>Calathus mollis</i>	4	Adult	Pitfall trap	C. Maclure	C. Maclure
28/07/2025	NJ 06098 64550	Coleoptera	<i>Calathus mollis</i>	6	Adult	Pitfall trap	C. Maclure	C. Maclure
22/09/2025	NJ 06049 64509	Coleoptera	<i>Calathus mollis</i>	1	Adult	Pitfall trap	C. Maclure	C. Maclure
22/09/2025	NJ 06098 64550	Coleoptera	<i>Calathus mollis</i>	1	Adult	Pitfall trap	C. Maclure	C. Maclure
20/10/2025	NJ 04778 63904	Coleoptera	<i>Calathus mollis</i>	1	Adult	Pitfall trap	C. Maclure	C. Maclure
28/07/2025	NJ 06098 64550	Coleoptera	<i>Carabus nemoralis</i>	1	Adult	Pitfall trap	C. Maclure	C. Maclure
25/08/2025	NJ 04878 63980	Coleoptera	<i>Carabus nemoralis</i>	1	Adult	Pitfall trap	C. Maclure	C. Maclure
20/10/2025	NJ 04971 63810	Coleoptera	<i>Carabus nemoralis</i>	1	Adult	Pitfall trap	C. Maclure	C. Maclure
20/10/2025	NJ 06088 64487	Coleoptera	<i>Carabus nemoralis</i>	3	Adult	Pitfall trap	C. Maclure	C. Maclure

28/07/2025	NJ 04959 63801	Coleoptera	<i>Carabus problematicus</i>	1	Adult	Pitfall trap	C. Maclure	J. Stockan
28/07/2025	NJ 05687 64163	Coleoptera	<i>Carabus problematicus</i>	2	Adult	Pitfall trap	C. Maclure	C. Maclure
28/07/2025	NJ 06098 64550	Coleoptera	<i>Carabus problematicus</i>	1	Adult	Pitfall trap	C. Maclure	C. Maclure
25/08/2025	NJ 04959 63801	Coleoptera	<i>Carabus problematicus</i>	1	Adult	Pitfall trap	C. Maclure	C. Maclure
25/08/2025	NJ 04971 63810	Coleoptera	<i>Carabus problematicus</i>	1	Adult	Pitfall trap	C. Maclure	C. Maclure
25/08/2025	NJ 05361 64028	Coleoptera	<i>Carabus problematicus</i>	1	Adult	Pitfall trap	C. Maclure	C. Maclure
25/08/2025	NJ 06049 64509	Coleoptera	<i>Carabus problematicus</i>	2	Adult	Pitfall trap	C. Maclure	C. Maclure
25/08/2025	NJ 06088 64487	Coleoptera	<i>Carabus problematicus</i>	2	Adult	Pitfall trap	C. Maclure	C. Maclure
25/08/2025	NJ 06098 64550	Coleoptera	<i>Carabus problematicus</i>	3	Adult	Pitfall trap	C. Maclure	C. Maclure
22/09/2025	NJ 04778 63904	Coleoptera	<i>Carabus problematicus</i>	1	Adult	Pitfall trap	C. Maclure	C. Maclure
22/09/2025	NJ 04878 63980	Coleoptera	<i>Carabus problematicus</i>	2	Adult	Pitfall trap	C. Maclure	C. Maclure
22/09/2025	NJ 04938 63880	Coleoptera	<i>Carabus problematicus</i>	1	Adult	Pitfall trap	C. Maclure	C. Maclure
22/09/2025	NJ 04938 64105	Coleoptera	<i>Carabus problematicus</i>	3	Adult	Pitfall trap	C. Maclure	C. Maclure
22/09/2025	NJ 04959 63801	Coleoptera	<i>Carabus problematicus</i>	2	Adult	Pitfall trap	C. Maclure	C. Maclure
22/09/2025	NJ 04971 63810	Coleoptera	<i>Carabus problematicus</i>	1	Adult	Pitfall trap	C. Maclure	C. Maclure
22/09/2025	NJ 05940 64031	Coleoptera	<i>Carabus problematicus</i>	1	Adult	Pitfall trap	C. Maclure	C. Maclure
22/09/2025	NJ 06049 64509	Coleoptera	<i>Carabus problematicus</i>	8	Adult	Pitfall trap	C. Maclure	C. Maclure
22/09/2025	NJ 06088 64487	Coleoptera	<i>Carabus problematicus</i>	6	Adult	Pitfall trap	C. Maclure	C. Maclure
20/10/2025	NJ 04938 64105	Coleoptera	<i>Carabus problematicus</i>	1	Adult	Pitfall trap	C. Maclure	C. Maclure
20/10/2025	NJ 05060 64060	Coleoptera	<i>Carabus problematicus</i>	2	Adult	Pitfall trap	C. Maclure	C. Maclure
20/10/2025	NJ 05752 64181	Coleoptera	<i>Carabus problematicus</i>	1	Adult	Pitfall trap	C. Maclure	C. Maclure
20/10/2025	NJ 06049 64509	Coleoptera	<i>Carabus problematicus</i>	6	Adult	Pitfall trap	C. Maclure	C. Maclure
20/10/2025	NJ 06088 64487	Coleoptera	<i>Carabus problematicus</i>	1	Adult	Pitfall trap	C. Maclure	C. Maclure
20/10/2025	NJ 06098 64550	Coleoptera	<i>Carabus problematicus</i>	1	Adult	Pitfall trap	C. Maclure	C. Maclure
25/08/2025	NJ 05687 64163	Coleoptera	<i>Catops kirbyi</i>	1	Adult	Pitfall trap	C. Maclure	C. Maclure
25/08/2025	NJ 06049 64509	Coleoptera	<i>Catops kirbyi</i>	1	Adult	Pitfall trap	C. Maclure	C. Maclure
22/09/2025	NJ 04903 63969	Coleoptera	<i>Catops kirbyi</i>	4	Adult	Pitfall trap	C. Maclure	C. Maclure
22/09/2025	NJ 04921 63968	Coleoptera	<i>Catops kirbyi</i>	1	Adult	Pitfall trap	C. Maclure	C. Maclure
22/09/2025	NJ 05687 64163	Coleoptera	<i>Catops kirbyi</i>	2	Adult	Pitfall trap	C. Maclure	C. Maclure
22/09/2025	NJ 06049 64509	Coleoptera	<i>Catops kirbyi</i>	1	Adult	Pitfall trap	C. Maclure	C. Maclure

22/09/2025	NJ 06088 64487	Coleoptera	<i>Catops kirbyi</i>	3	Adult	Pitfall trap	C. Maclure	C. Maclure
22/09/2025	NJ 06098 64550	Coleoptera	<i>Catops kirbyi</i>	2	Adult	Pitfall trap	C. Maclure	C. Maclure
20/10/2025	NJ 04903 63969	Coleoptera	<i>Catops kirbyi</i>	2	Adult	Pitfall trap	C. Maclure	C. Maclure
20/10/2025	NJ 04921 63968	Coleoptera	<i>Catops kirbyi</i>	1	Adult	Pitfall trap	C. Maclure	C. Maclure
20/10/2025	NJ 06049 64509	Coleoptera	<i>Catops kirbyi</i>	1	Adult	Pitfall trap	C. Maclure	C. Maclure
22/09/2025	NJ 04921 63968	Coleoptera	<i>Catops nigricans</i>	1	Adult	Pitfall trap	C. Maclure	C. Maclure
22/09/2025	NJ 06049 64509	Coleoptera	<i>Catops nigricans</i>	1	Adult	Pitfall trap	C. Maclure	C. Maclure
20/10/2025	NJ 04903 63969	Coleoptera	<i>Catops nigricans</i>	4	Adult	Pitfall trap	C. Maclure	C. Maclure
28/07/2025	NJ 04778 63904	Orthoptera	<i>Chorthippus brunneus</i>	1		Pitfall trap	C. Maclure	C. Maclure
25/08/2025	NJ 05060 64060	Orthoptera	<i>Chorthippus brunneus</i>	1		Pitfall trap	C. Maclure	C. Maclure
25/08/2025	NJ 05098 64061	Orthoptera	<i>Chorthippus brunneus</i>	2		Pitfall trap	C. Maclure	C. Maclure
25/08/2025	NJ 05752 64181	Orthoptera	<i>Chorthippus brunneus</i>	1		Pitfall trap	C. Maclure	C. Maclure
25/08/2025	NJ 05940 64031	Orthoptera	<i>Chorthippus brunneus</i>	1		Pitfall trap	C. Maclure	C. Maclure
22/09/2025	NJ 05752 64181	Orthoptera	<i>Chorthippus brunneus</i>	1		Pitfall trap	C. Maclure	C. Maclure
28/07/2025	NJ 04771 63933	Coleoptera	<i>Coccinella septempunctata</i>	1	Adult	Pitfall trap	C. Maclure	C. Maclure
25/08/2025	NJ 04910 64154	Coleoptera	<i>Coccinella septempunctata</i>	1	Adult	Pitfall trap	C. Maclure	C. Maclure
25/08/2025	NJ 05687 64163	Coleoptera	<i>Coccinella septempunctata</i>	1	Adult	Pitfall trap	C. Maclure	C. Maclure
28/07/2025	NJ 05098 64061	Coleoptera	<i>Coccinella undecimpunctata</i>	1	Adult	Pitfall trap	C. Maclure	J. Stockan
25/08/2025	NJ 04771 63933	Coleoptera	<i>Coccinella undecimpunctata</i>	1	Adult	Pitfall trap	C. Maclure	C. Maclure
28/07/2025	NJ 04903 63969	Coleoptera	<i>Cortinicara gibbosa</i>	2	Adult	Pitfall trap	C. Maclure	C. Maclure
28/07/2025	NJ 05687 64163	Coleoptera	<i>Cortinicara gibbosa</i>	1	Adult	Pitfall trap	C. Maclure	C. Maclure
10/08/2025	NJ 06 SE	Coleoptera	<i>Cortinicara gibbosa</i>	1	Adult	Hand collection	A. Featherstone	C. Maclure
25/08/2025	NJ 04921 63968	Coleoptera	<i>Cortinicara gibbosa</i>	1	Adult	Pitfall trap	C. Maclure	C. Maclure
25/08/2025	NJ 05060 64060	Coleoptera	<i>Cortinicara gibbosa</i>	1	Adult	Pitfall trap	C. Maclure	C. Maclure
25/08/2025	NJ 05687 64163	Coleoptera	<i>Cortinicara gibbosa</i>	5	Adult	Pitfall trap	C. Maclure	C. Maclure
22/09/2025	NJ 04878 63980	Coleoptera	<i>Cortinicara gibbosa</i>	3	Adult	Pitfall trap	C. Maclure	C. Maclure
22/09/2025	NJ 04921 63968	Coleoptera	<i>Cortinicara gibbosa</i>	3	Adult	Pitfall trap	C. Maclure	C. Maclure
22/09/2025	NJ 05361 64028	Coleoptera	<i>Cortinicara gibbosa</i>	1	Adult	Pitfall trap	C. Maclure	C. Maclure
22/09/2025	NJ 05378 64039	Coleoptera	<i>Cortinicara gibbosa</i>	1	Adult	Pitfall trap	C. Maclure	C. Maclure
22/09/2025	NJ 05687 64163	Coleoptera	<i>Cortinicara gibbosa</i>	2	Adult	Pitfall trap	C. Maclure	C. Maclure

20/10/2025	NJ 04878 63980	Coleoptera	<i>Cortinicara gibbosa</i>	2	Adult	Pitfall trap	C. Maclure	C. Maclure
20/10/2025	NJ 04903 63969	Coleoptera	<i>Cortinicara gibbosa</i>	1	Adult	Pitfall trap	C. Maclure	C. Maclure
20/10/2025	NJ 05361 64028	Coleoptera	<i>Cortinicara gibbosa</i>	2	Adult	Pitfall trap	C. Maclure	C. Maclure
22/09/2025	NJ 05361 64028	Coleoptera	<i>Cychrus caraboides</i>	1	Adult	Pitfall trap	C. Maclure	C. Maclure
22/09/2025	NJ 06098 64550	Coleoptera	<i>Cychrus caraboides</i>	1	Adult	Pitfall trap	C. Maclure	C. Maclure
25/08/2025	NJ 05361 64028	Coleoptera	<i>Dalopius marginatus</i>	1	Adult	Pitfall trap	C. Maclure	C. Maclure
22/09/2025	NJ 04938 64105	Coleoptera	<i>Dicheirotrichus placidus</i>	1	Adult	Pitfall trap	C. Maclure	C. Maclure
28/07/2025	NJ 04778 63904	Araneae	<i>Drassyllus pusillus</i>	2		Pitfall trap	C. Maclure	C. Maclure
28/07/2025	NJ 05687 64163	Araneae	<i>Drassyllus pusillus</i>	1		Pitfall trap	C. Maclure	C. Maclure
28/07/2025	NJ 06049 64509	Araneae	<i>Drassyllus pusillus</i>	1		Pitfall trap	C. Maclure	C. Maclure
25/08/2025	NJ 04959 63801	Araneae	<i>Drassyllus pusillus</i>	1		Pitfall trap	C. Maclure	C. Maclure
25/08/2025	NJ 04971 63810	Araneae	<i>Drassyllus pusillus</i>	1		Pitfall trap	C. Maclure	C. Maclure
25/08/2025	NJ 05687 64163	Araneae	<i>Drassyllus pusillus</i>	1		Pitfall trap	C. Maclure	C. Maclure
20/10/2025	NJ 05687 64163	Araneae	<i>Drassyllus pusillus</i>	1		Pitfall trap	C. Maclure	C. Maclure
28/07/2025	NJ 06098 64550	Coleoptera	<i>Drusilla canaliculata</i>	14	Adult	Pitfall trap	C. Maclure	C. Maclure
25/08/2025	NJ 06049 64509	Coleoptera	<i>Drusilla canaliculata</i>	15	Adult	Pitfall trap	C. Maclure	C. Maclure
22/09/2025	NJ 06098 64550	Coleoptera	<i>Drusilla canaliculata</i>	16	Adult	Pitfall trap	C. Maclure	C. Maclure
20/10/2025	NJ 04778 63904	Coleoptera	<i>Drusilla canaliculata</i>	1	Adult	Pitfall trap	C. Maclure	C. Maclure
20/10/2025	NJ 06049 64509	Coleoptera	<i>Drusilla canaliculata</i>	12	Adult	Pitfall trap	C. Maclure	C. Maclure
20/10/2025	NJ 06088 64487	Coleoptera	<i>Drusilla canaliculata</i>	1	Adult	Pitfall trap	C. Maclure	C. Maclure
20/10/2025	NJ 06098 64550	Coleoptera	<i>Drusilla canaliculata</i>	5	Adult	Pitfall trap	C. Maclure	C. Maclure
28/07/2025	NJ 04903 63969	Hemiptera	<i>Drymus brunneus</i>	1		Pitfall trap	C. Maclure	C. Maclure
28/07/2025	NJ 04921 63968	Hemiptera	<i>Drymus brunneus</i>	2		Pitfall trap	C. Maclure	C. Maclure
28/07/2025	NJ 05378 64039	Hemiptera	<i>Drymus brunneus</i>	3		Pitfall trap	C. Maclure	C. Maclure
25/08/2025	NJ 05361 64028	Hemiptera	<i>Drymus brunneus</i>	6		Pitfall trap	C. Maclure	C. Maclure
25/08/2025	NJ 05378 64039	Hemiptera	<i>Drymus brunneus</i>	13		Pitfall trap	C. Maclure	C. Maclure
25/08/2025	NJ 05635 64104	Hemiptera	<i>Drymus brunneus</i>	1		Pitfall trap	C. Maclure	C. Maclure
22/09/2025	NJ 04921 63968	Hemiptera	<i>Drymus brunneus</i>	1		Pitfall trap	C. Maclure	C. Maclure
22/09/2025	NJ 05361 64028	Hemiptera	<i>Drymus brunneus</i>	1		Pitfall trap	C. Maclure	C. Maclure
22/09/2025	NJ 05378 64039	Hemiptera	<i>Drymus brunneus</i>	1		Pitfall trap	C. Maclure	C. Maclure

20/10/2025	NJ 04878 63980	Hemiptera	<i>Drymus brunneus</i>	1		Pitfall trap	C. Maclure	C. Maclure
20/10/2025	NJ 04903 63969	Hemiptera	<i>Drymus brunneus</i>	1		Pitfall trap	C. Maclure	C. Maclure
20/10/2025	NJ 05378 64039	Hemiptera	<i>Drymus brunneus</i>	1		Pitfall trap	C. Maclure	C. Maclure
22/09/2025	NJ 04921 63968	Diptera	<i>Dryomyza anilis</i>	2		Pitfall trap	C. Maclure	C. Maclure
20/10/2025	NJ 05361 64028	Diptera	<i>Dryomyza anilis</i>	6		Pitfall trap	C. Maclure	C. Maclure
20/10/2025	NJ 05378 64039	Diptera	<i>Dryomyza anilis</i>	3		Pitfall trap	C. Maclure	C. Maclure
25/08/2025	NJ 05361 64028	Hemiptera	<i>Elasmostethus interstinctus</i>	1		Pitfall trap	C. Maclure	C. Maclure
27/04/2025	NJ 06 SE	Coleoptera	<i>Epuraea marseuli</i>	1	Adult	Hand collection	A. Featherstone	C. Maclure
20/10/2025	NJ 05378 64039	Coleoptera	<i>Epuraea terminalis</i>	1	Adult	Pitfall trap	C. Maclure	C. Maclure
28/07/2025	NJ 05635 64104	Coleoptera	<i>Euophryum confine</i>	1	Adult	Pitfall trap	C. Maclure	J. Stockan
25/08/2025	NJ 05635 64104	Coleoptera	<i>Euophryum confine</i>	1	Adult	Pitfall trap	C. Maclure	C. Maclure
28/07/2025	NJ 05752 64181	Hemiptera	<i>Eupelix cuspidata</i>	4		Pitfall trap	C. Maclure	C. Maclure
25/08/2025	NJ 05752 64181	Hemiptera	<i>Eupelix cuspidata</i>	1		Pitfall trap	C. Maclure	C. Maclure
28/07/2025	NJ 05098 64061	Hymenoptera	<i>Formica fusca</i>	3	Adult	Pitfall trap	C. Maclure	J. Stockan
28/07/2025	NJ 05098 64061	Hymenoptera	<i>Formica lemani</i>	25	Adult	Pitfall trap	C. Maclure	J. Stockan
28/07/2025	NJ 05687 64163	Hymenoptera	<i>Formica lemani</i>	2	Adult	Pitfall trap	C. Maclure	C. Maclure
28/07/2025	NJ 05940 64031	Hymenoptera	<i>Formica lemani</i>	1	Adult	Pitfall trap	C. Maclure	J. Stockan
28/07/2025	NJ 06049 64509	Hymenoptera	<i>Formica lemani</i>	1	Adult	Pitfall trap	C. Maclure	J. Stockan
25/08/2025	NJ 04778 63904	Hymenoptera	<i>Formica lemani</i>	1	Adult	Pitfall trap	C. Maclure	J. Stockan
25/08/2025	NJ 04910 64154	Hymenoptera	<i>Formica lemani</i>	2	Adult	Pitfall trap	C. Maclure	J. Stockan
25/08/2025	NJ 05098 64061	Hymenoptera	<i>Formica lemani</i>	1	Adult	Pitfall trap	C. Maclure	C. Maclure
25/08/2025	NJ 05618 64092	Hymenoptera	<i>Formica lemani</i>	1	Adult	Pitfall trap	C. Maclure	C. Maclure
25/08/2025	NJ 05635 64104	Hymenoptera	<i>Formica lemani</i>	2	Adult	Pitfall trap	C. Maclure	C. Maclure
25/08/2025	NJ 05687 64163	Hymenoptera	<i>Formica lemani</i>	1	Adult	Pitfall trap	C. Maclure	C. Maclure
25/08/2025	NJ 05752 64181	Hymenoptera	<i>Formica lemani</i>	1+	Adult	Pitfall trap	C. Maclure	C. Maclure
25/08/2025	NJ 06098 64550	Hymenoptera	<i>Formica lemani</i>	1	Adult	Pitfall trap	C. Maclure	C. Maclure
25/08/2025	NJ 06098 64550	Hymenoptera	<i>Formica lemani</i>	4	Adult	Pitfall trap	C. Maclure	J. Stockan
22/09/2025	NJ 05060 64060	Hymenoptera	<i>Formica lemani</i>	1	Adult	Pitfall trap	C. Maclure	J. Stockan
22/09/2025	NJ 05687 64163	Hymenoptera	<i>Formica lemani</i>	1	Adult	Pitfall trap	C. Maclure	J. Stockan
22/09/2025	NJ 05752 64181	Hymenoptera	<i>Formica lemani</i>	1	Adult	Pitfall trap	C. Maclure	C. Maclure

22/09/2025	NJ 06049 64509	Hymenoptera	<i>Formica lemani</i>	1+	Adult	Pitfall trap	C. Maclure	C. Maclure
22/09/2025	NJ 06088 64487	Hymenoptera	<i>Formica lemani</i>	1	Adult	Pitfall trap	C. Maclure	C. Maclure
22/09/2025	NJ 06098 64550	Hymenoptera	<i>Formica lemani</i>	1+	Adult	Pitfall trap	C. Maclure	C. Maclure
20/10/2025	NJ 04910 64154	Hymenoptera	<i>Formica lemani</i>	1	Adult	Pitfall trap	C. Maclure	J. Stockan
20/10/2025	NJ 05060 64060	Hymenoptera	<i>Formica lemani</i>	1	Adult	Pitfall trap	C. Maclure	C. Maclure
20/10/2025	NJ 05060 64060	Hymenoptera	<i>Formica lemani</i>	1	Adult	Pitfall trap	C. Maclure	J. Stockan
20/10/2025	NJ 06049 64509	Hymenoptera	<i>Formica lemani</i>	1	Adult	Pitfall trap	C. Maclure	J. Stockan
20/10/2025	NJ 06098 64550	Hymenoptera	<i>Formica lemani</i>	4	Adult	Pitfall trap	C. Maclure	J. Stockan
28/07/2025	NJ 05752 64181	Hymenoptera	<i>Formica lugubris</i>	1	Adult	Pitfall trap	C. Maclure	C. Maclure
28/07/2025	NJ 06049 64509	Hymenoptera	<i>Formica lugubris</i>	2	Adult	Pitfall trap	C. Maclure	J. Stockan
28/07/2025	NJ 06098 64550	Hymenoptera	<i>Formica lugubris</i>	1+	Adult	Pitfall trap	C. Maclure	C. Maclure
25/08/2025	NJ 05098 64061	Hymenoptera	<i>Formica lugubris</i>	1	Adult	Pitfall trap	C. Maclure	J. Stockan
25/08/2025	NJ 06049 64509	Hymenoptera	<i>Formica lugubris</i>	1+	Adult	Pitfall trap	C. Maclure	J. Stockan
25/08/2025	NJ 06088 64487	Hymenoptera	<i>Formica lugubris</i>	2	Adult	Pitfall trap	C. Maclure	J. Stockan
25/08/2025	NJ 06098 64550	Hymenoptera	<i>Formica lugubris</i>	5+	Adult	Pitfall trap	C. Maclure	J. Stockan
22/09/2025	NJ 04771 63933	Hymenoptera	<i>Formica lugubris</i>	1+	Adult	Pitfall trap	C. Maclure	C. Maclure
22/09/2025	NJ 05361 64028	Hymenoptera	<i>Formica lugubris</i>	1	Adult	Pitfall trap	C. Maclure	C. Maclure
22/09/2025	NJ 05940 64031	Hymenoptera	<i>Formica lugubris</i>	1	Adult	Pitfall trap	C. Maclure	C. Maclure
22/09/2025	NJ 06049 64509	Hymenoptera	<i>Formica lugubris</i>	1+	Adult	Pitfall trap	C. Maclure	C. Maclure
22/09/2025	NJ 06098 64550	Hymenoptera	<i>Formica lugubris</i>	1+	Adult	Pitfall trap	C. Maclure	C. Maclure
20/10/2025	NJ 05940 64031	Hymenoptera	<i>Formica lugubris</i>	1	Adult	Pitfall trap	C. Maclure	C. Maclure
20/10/2025	NJ 06049 64509	Hymenoptera	<i>Formica lugubris</i>	4	Adult	Pitfall trap	C. Maclure	J. Stockan
20/10/2025	NJ 06088 64487	Hymenoptera	<i>Formica lugubris</i>	2	Adult	Pitfall trap	C. Maclure	C. Maclure
20/10/2025	NJ 06098 64550	Hymenoptera	<i>Formica lugubris</i>	9	Adult	Pitfall trap	C. Maclure	J. Stockan
20/10/2025	NJ 06088 64487	Hymenoptera	<i>Gelis proximus</i>	1	Adult	Pitfall trap	C. Maclure	J. Stockan
28/07/2025	NJ 05687 64163	Araneae	<i>Haplodrassus signifer</i>	2		Pitfall trap	C. Maclure	C. Maclure
25/08/2025	NJ 05687 64163	Araneae	<i>Haplodrassus signifer</i>	2		Pitfall trap	C. Maclure	C. Maclure
22/09/2025	NJ 05635 64104	Araneae	<i>Haplodrassus signifer</i>	1		Pitfall trap	C. Maclure	C. Maclure
28/07/2025	NJ 05060 64060	Coleoptera	<i>Harpalus rufipes</i>	3	Adult	Pitfall trap	C. Maclure	C. Maclure
25/08/2025	NJ 04971 63810	Coleoptera	<i>Harpalus rufipes</i>	1	Adult	Pitfall trap	C. Maclure	C. Maclure

28/07/2025	NJ 04971 63810	Araneae	<i>Heliophanus flavipes</i>	1		Pitfall trap	C. Maclure	C. Maclure
28/07/2025	NJ 05687 64163	Araneae	<i>Heliophanus flavipes</i>	1		Pitfall trap	C. Maclure	C. Maclure
20/10/2025	NJ 04938 63880	Coleoptera	<i>Helophorus brevivalpis</i>	2	Adult	Pitfall trap	C. Maclure	C. Maclure
20/10/2025	NJ 05098 64061	Hemiptera	<i>Kleidocerys resedae</i>	1		Pitfall trap	C. Maclure	C. Maclure
25/08/2025	NJ 05378 64039	Coleoptera	<i>Lagria hirta</i>	1	Adult	Pitfall trap	C. Maclure	C. Maclure
28/07/2025	NJ 04771 63933	Hymenoptera	<i>Lasius niger</i>	1	Adult	Pitfall trap	C. Maclure	J. Stockan
28/07/2025	NJ 04903 63969	Hymenoptera	<i>Lasius niger</i>	1	Adult	Pitfall trap	C. Maclure	J. Stockan
28/07/2025	NJ 04986 64107	Hymenoptera	<i>Lasius niger</i>	1	Adult	Pitfall trap	C. Maclure	C. Maclure
28/07/2025	NJ 06088 64487	Hymenoptera	<i>Lasius niger</i>	1	Adult	Pitfall trap	C. Maclure	J. Stockan
25/08/2025	NJ 04771 63933	Hymenoptera	<i>Lasius niger</i>	5+	Adult	Pitfall trap	C. Maclure	J. Stockan
25/08/2025	NJ 04910 64154	Hymenoptera	<i>Lasius niger</i>	1	Adult	Pitfall trap	C. Maclure	J. Stockan
25/08/2025	NJ 05060 64060	Hymenoptera	<i>Lasius niger</i>	1	Adult	Pitfall trap	C. Maclure	J. Stockan
25/08/2025	NJ 05098 64061	Hymenoptera	<i>Lasius niger</i>	3	Adult	Pitfall trap	C. Maclure	J. Stockan
22/09/2025	NJ 04903 63969	Hymenoptera	<i>Lasius niger</i>	1	Adult	Pitfall trap	C. Maclure	J. Stockan
22/09/2025	NJ 04910 64154	Hymenoptera	<i>Lasius niger</i>	1	Adult	Pitfall trap	C. Maclure	J. Stockan
22/09/2025	NJ 05060 64060	Hymenoptera	<u><i>Lasius niger</i></u>	1	Adult	Pitfall trap	C. Maclure	J. Stockan
20/10/2025	NJ 04771 63933	Hymenoptera	<u><i>Lasius niger</i></u>	3	Adult	Pitfall trap	C. Maclure	J. Stockan
20/10/2025	NJ 04910 64154	Hymenoptera	<i>Lasius niger</i>	3	Adult	Pitfall trap	C. Maclure	J. Stockan
20/10/2025	NJ 05060 64060	Hymenoptera	<i>Lasius niger</i>	3	Adult	Pitfall trap	C. Maclure	J. Stockan
25/08/2025	NJ 05752 64181	Coleoptera	<i>Leiodes furva</i>	1	Adult	Pitfall trap	C. Maclure	C. Maclure
20/10/2025	NJ 05361 64028	Coleoptera	<i>Leistus rufomarginatus</i>	1	Adult	Pitfall trap	C. Maclure	C. Maclure
25/08/2025	NJ 04971 63810	Coleoptera	<i>Leistus terminatus</i>	1	Adult	Pitfall trap	C. Maclure	C. Maclure
25/08/2025	NJ 05361 64028	Coleoptera	<i>Leistus terminatus</i>	1	Adult	Pitfall trap	C. Maclure	C. Maclure
25/08/2025	NJ 05618 64092	Coleoptera	<i>Leistus terminatus</i>	1	Adult	Pitfall trap	C. Maclure	C. Maclure
28/07/2025	NJ 04771 63933	Lepidoptera	<i>Lepidoptera</i>	1		Pitfall trap	C. Maclure	C. Maclure
28/07/2025	NJ 04938 63880	Lepidoptera	<i>Lepidoptera</i>	4		Pitfall trap	C. Maclure	C. Maclure
28/07/2025	NJ 04971 63810	Lepidoptera	<i>Lepidoptera</i>	1		Pitfall trap	C. Maclure	C. Maclure
28/07/2025	NJ 05060 64060	Lepidoptera	<i>Lepidoptera</i>	1		Pitfall trap	C. Maclure	C. Maclure
28/07/2025	NJ 05098 64061	Lepidoptera	<i>Lepidoptera</i>	7		Pitfall trap	C. Maclure	C. Maclure
25/08/2025	NJ 04878 63980	Lepidoptera	<i>Lepidoptera</i>	1		Pitfall trap	C. Maclure	C. Maclure

25/08/2025	NJ 04938 63880	Lepidoptera	<i>Lepidoptera</i>	2		Pitfall trap	C. Maclure	C. Maclure
25/08/2025	NJ 04938 64105	Lepidoptera	<i>Lepidoptera</i>	1		Pitfall trap	C. Maclure	C. Maclure
25/08/2025	NJ 04971 63810	Lepidoptera	<i>Lepidoptera</i>	1		Pitfall trap	C. Maclure	C. Maclure
25/08/2025	NJ 05040 64004	Lepidoptera	<i>Lepidoptera</i>	2		Pitfall trap	C. Maclure	C. Maclure
25/08/2025	NJ 05060 64060	Lepidoptera	<i>Lepidoptera</i>	5		Pitfall trap	C. Maclure	C. Maclure
25/08/2025	NJ 05075 64075	Lepidoptera	<i>Lepidoptera</i>	1		Pitfall trap	C. Maclure	C. Maclure
25/08/2025	NJ 05098 64061	Lepidoptera	<i>Lepidoptera</i>	1		Pitfall trap	C. Maclure	C. Maclure
22/09/2025	NJ 05940 64031	Lepidoptera	<i>Lepidoptera</i>	1		Pitfall trap	C. Maclure	C. Maclure
20/10/2025	NJ 04778 63904	Lepidoptera	<i>Lepidoptera</i>	1		Pitfall trap	C. Maclure	C. Maclure
20/10/2025	NJ 04910 64154	Lepidoptera	<i>Lepidoptera</i>	1		Pitfall trap	C. Maclure	C. Maclure
20/10/2025	NJ 04938 64105	Lepidoptera	<i>Lepidoptera</i>	1		Pitfall trap	C. Maclure	C. Maclure
20/10/2025	NJ 04959 63801	Lepidoptera	<i>Lepidoptera</i>	1		Pitfall trap	C. Maclure	C. Maclure
20/10/2025	NJ 05060 64060	Lepidoptera	<i>Lepidoptera</i>	3		Pitfall trap	C. Maclure	C. Maclure
20/10/2025	NJ 05687 64163	Lepidoptera	<i>Lepidoptera</i>	1		Pitfall trap	C. Maclure	C. Maclure
28/07/2025	NJ 05060 64060	Hemiptera	<i>Macrodema micropterum</i>	1		Pitfall trap	C. Maclure	C. Maclure
25/08/2025	NJ 04878 63980	Hemiptera	<i>Mecomma ambulans</i>	2		Pitfall trap	C. Maclure	C. Maclure
25/08/2025	NJ 04921 63968	Hemiptera	<i>Mecomma ambulans</i>	2		Pitfall trap	C. Maclure	C. Maclure
22/09/2025	NJ 04878 63980	Hemiptera	<i>Mecomma ambulans</i>	3		Pitfall trap	C. Maclure	C. Maclure
22/09/2025	NJ 04903 63969	Hemiptera	<i>Mecomma ambulans</i>	1		Pitfall trap	C. Maclure	C. Maclure
22/09/2025	NJ 04921 63968	Hemiptera	<i>Mecomma ambulans</i>	1		Pitfall trap	C. Maclure	C. Maclure
16/05/2025	NJ 06 SE	Coleoptera	<i>Melanotus villosus</i>	1	Adult	Hand collection	A. Featherstone	C. Maclure
16/07/2025	NJ 06 SE	Coleoptera	<i>Miarus campanulae</i>	1	Adult	Hand collection	A. Featherstone	C. Maclure
23/07/2025	NJ 06 SE	Coleoptera	<i>Miarus campanulae</i>	1	Adult	Hand collection	A. Featherstone	C. Maclure
25/08/2025	NJ 06049 64509	Araneae	<i>Micaria pulicaria</i>	1		Pitfall trap	C. Maclure	C. Maclure
22/09/2025	NJ 04959 63801	Araneae	<i>Micaria pulicaria</i>	1		Pitfall trap	C. Maclure	C. Maclure
28/07/2025	NJ 04903 63969	Coleoptera	<i>Micrambe ulicis</i>	11	Adult	Pitfall trap	C. Maclure	C. Maclure
28/07/2025	NJ 04921 63968	Coleoptera	<i>Micrambe ulicis</i>	3	Adult	Pitfall trap	C. Maclure	C. Maclure
29/07/2025	NJ 06 SE	Coleoptera	<i>Micrambe ulicis</i>	2	Adult	Hand collection	A. Featherstone	C. Maclure
10/08/2025	NJ 06 SE	Coleoptera	<i>Micrambe ulicis</i>	2	Adult	Hand collection	A. Featherstone	C. Maclure
21/08/2025	NJ 06 SE	Coleoptera	<i>Micrambe ulicis</i>	1	Adult	Hand collection	A. Featherstone	C. Maclure

24/08/2025	NJ 06 SE	Coleoptera	<i>Micrambe ulicis</i>	1	Adult	Hand collection	A. Featherstone	C. Maclure
25/08/2025	NJ 04878 63980	Coleoptera	<i>Micrambe ulicis</i>	1+	Adult	Pitfall trap	C. Maclure	C. Maclure
25/08/2025	NJ 04903 63969	Coleoptera	<i>Micrambe ulicis</i>	19	Adult	Pitfall trap	C. Maclure	C. Maclure
25/08/2025	NJ 04921 63968	Coleoptera	<i>Micrambe ulicis</i>	1+	Adult	Pitfall trap	C. Maclure	C. Maclure
25/08/2025	NJ 05361 64028	Coleoptera	<i>Micrambe ulicis</i>	2	Adult	Pitfall trap	C. Maclure	C. Maclure
25/08/2025	NJ 05378 64039	Coleoptera	<i>Micrambe ulicis</i>	1	Adult	Pitfall trap	C. Maclure	C. Maclure
25/08/2025	NJ 05687 64163	Coleoptera	<i>Micrambe ulicis</i>	1	Adult	Pitfall trap	C. Maclure	C. Maclure
25/08/2025	NJ 05752 64181	Coleoptera	<i>Micrambe ulicis</i>	5	Adult	Pitfall trap	C. Maclure	C. Maclure
25/08/2025	NJ 05940 64031	Coleoptera	<i>Micrambe ulicis</i>	4	Adult	Pitfall trap	C. Maclure	C. Maclure
03/09/2025	NJ 06 SE	Coleoptera	<i>Micrambe ulicis</i>	1	Adult	Hand collection	A. Featherstone	C. Maclure
22/09/2025	NJ 04878 63980	Coleoptera	<i>Micrambe ulicis</i>	29	Adult	Pitfall trap	C. Maclure	C. Maclure
22/09/2025	NJ 04903 63969	Coleoptera	<i>Micrambe ulicis</i>	1+	Adult	Pitfall trap	C. Maclure	C. Maclure
22/09/2025	NJ 04921 63968	Coleoptera	<i>Micrambe ulicis</i>	9	Adult	Pitfall trap	C. Maclure	C. Maclure
22/09/2025	NJ 04938 63880	Coleoptera	<i>Micrambe ulicis</i>	1	Adult	Pitfall trap	C. Maclure	C. Maclure
22/09/2025	NJ 04959 63801	Coleoptera	<i>Micrambe ulicis</i>	1	Adult	Pitfall trap	C. Maclure	C. Maclure
22/09/2025	NJ 05361 64028	Coleoptera	<i>Micrambe ulicis</i>	9	Adult	Pitfall trap	C. Maclure	C. Maclure
22/09/2025	NJ 05378 64039	Coleoptera	<i>Micrambe ulicis</i>	2	Adult	Pitfall trap	C. Maclure	C. Maclure
22/09/2025	NJ 05635 64104	Coleoptera	<i>Micrambe ulicis</i>	1	Adult	Pitfall trap	C. Maclure	C. Maclure
22/09/2025	NJ 05687 64163	Coleoptera	<i>Micrambe ulicis</i>	4	Adult	Pitfall trap	C. Maclure	C. Maclure
22/09/2025	NJ 05752 64181	Coleoptera	<i>Micrambe ulicis</i>	11	Adult	Pitfall trap	C. Maclure	C. Maclure
22/09/2025	NJ 06098 64550	Coleoptera	<i>Micrambe ulicis</i>	1	Adult	Pitfall trap	C. Maclure	C. Maclure
20/10/2025	NJ 04771 63933	Coleoptera	<i>Micrambe ulicis</i>	1	Adult	Pitfall trap	C. Maclure	C. Maclure
20/10/2025	NJ 04878 63980	Coleoptera	<i>Micrambe ulicis</i>	23	Adult	Pitfall trap	C. Maclure	C. Maclure
20/10/2025	NJ 04903 63969	Coleoptera	<i>Micrambe ulicis</i>	8	Adult	Pitfall trap	C. Maclure	C. Maclure
20/10/2025	NJ 04921 63968	Coleoptera	<i>Micrambe ulicis</i>	9	Adult	Pitfall trap	C. Maclure	C. Maclure
20/10/2025	NJ 04938 64105	Coleoptera	<i>Micrambe ulicis</i>	1	Adult	Pitfall trap	C. Maclure	C. Maclure
20/10/2025	NJ 04959 63801	Coleoptera	<i>Micrambe ulicis</i>	1	Adult	Pitfall trap	C. Maclure	C. Maclure
20/10/2025	NJ 04971 63810	Coleoptera	<i>Micrambe ulicis</i>	1	Adult	Pitfall trap	C. Maclure	C. Maclure
20/10/2025	NJ 05040 64004	Coleoptera	<i>Micrambe ulicis</i>	2	Adult	Pitfall trap	C. Maclure	C. Maclure
20/10/2025	NJ 05060 64060	Coleoptera	<i>Micrambe ulicis</i>	1	Adult	Pitfall trap	C. Maclure	C. Maclure

20/10/2025	NJ 05098 64061	Coleoptera	<i>Micrambe ulicis</i>	1	Adult	Pitfall trap	C. Maclure	C. Maclure
20/10/2025	NJ 05361 64028	Coleoptera	<i>Micrambe ulicis</i>	5	Adult	Pitfall trap	C. Maclure	C. Maclure
20/10/2025	NJ 05378 64039	Coleoptera	<i>Micrambe ulicis</i>	4	Adult	Pitfall trap	C. Maclure	C. Maclure
20/10/2025	NJ 05635 64104	Coleoptera	<i>Micrambe ulicis</i>	1	Adult	Pitfall trap	C. Maclure	C. Maclure
20/10/2025	NJ 05687 64163	Coleoptera	<i>Micrambe ulicis</i>	1	Adult	Pitfall trap	C. Maclure	C. Maclure
20/10/2025	NJ 05752 64181	Coleoptera	<i>Micrambe ulicis</i>	15	Adult	Pitfall trap	C. Maclure	C. Maclure
20/10/2025	NJ 05940 64031	Coleoptera	<i>Micrambe ulicis</i>	3	Adult	Pitfall trap	C. Maclure	C. Maclure
20/10/2025	NJ 06098 64550	Coleoptera	<i>Micrambe ulicis</i>	1	Adult	Pitfall trap	C. Maclure	C. Maclure
25/08/2025	NJ 05635 64104	Coleoptera	<i>Micropelys staphylinoides</i>	1	Adult	Pitfall trap	C. Maclure	C. Maclure
28/07/2025	NJ 04771 63933	Coleoptera	<i>Morychus aeneus</i>	1	Adult	Pitfall trap	C. Maclure	C. Maclure
28/07/2025	NJ 04771 63933	Orthoptera	<i>Myrmeleotettix maculatus</i>	1		Pitfall trap	C. Maclure	C. Maclure
25/08/2025	NJ 05940 64031	Orthoptera	<i>Myrmeleotettix maculatus</i>	2		Pitfall trap	C. Maclure	C. Maclure
25/08/2025	NJ 06049 64509	Orthoptera	<i>Myrmeleotettix maculatus</i>	1		Pitfall trap	C. Maclure	C. Maclure
22/09/2025	NJ 05060 64060	Orthoptera	<i>Myrmeleotettix maculatus</i>	1		Pitfall trap	C. Maclure	C. Maclure
28/07/2025	NJ 04778 63904	Hymenoptera	<i>Myrmica ruginodis</i>	100+	Adult	Pitfall trap	C. Maclure	J. Stockan
28/07/2025	NJ 05060 64060	Hymenoptera	<i>Myrmica ruginodis</i>	1	Adult	Pitfall trap	C. Maclure	J. Stockan
28/07/2025	NJ 05635 64104	Hymenoptera	<i>Myrmica ruginodis</i>	1	Adult	Pitfall trap	C. Maclure	J. Stockan
28/07/2025	NJ 06049 64509	Hymenoptera	<i>Myrmica ruginodis</i>	1	Adult	Pitfall trap	C. Maclure	J. Stockan
28/07/2025	NJ 06088 64487	Hymenoptera	<i>Myrmica ruginodis</i>	5	Adult	Pitfall trap	C. Maclure	J. Stockan
28/07/2025	NJ 06098 64550	Hymenoptera	<i>Myrmica ruginodis</i>	3+	Adult	Pitfall trap	C. Maclure	J. Stockan
25/08/2025	NJ 04778 63904	Hymenoptera	<i>Myrmica ruginodis</i>	5+	Adult	Pitfall trap	C. Maclure	J. Stockan
25/08/2025	NJ 04878 63980	Hymenoptera	<i>Myrmica ruginodis</i>	1	Adult	Pitfall trap	C. Maclure	J. Stockan
25/08/2025	NJ 04910 64154	Hymenoptera	<i>Myrmica ruginodis</i>	1	Adult	Pitfall trap	C. Maclure	J. Stockan
25/08/2025	NJ 05060 64060	Hymenoptera	<i>Myrmica ruginodis</i>	1	Adult	Pitfall trap	C. Maclure	J. Stockan
25/08/2025	NJ 05075 64075	Hymenoptera	<i>Myrmica ruginodis</i>	1	Adult	Pitfall trap	C. Maclure	J. Stockan
25/08/2025	NJ 05378 64039	Hymenoptera	<i>Myrmica ruginodis</i>	1	Adult	Pitfall trap	C. Maclure	J. Stockan
25/08/2025	NJ 05618 64092	Hymenoptera	<i>Myrmica ruginodis</i>	1	Adult	Pitfall trap	C. Maclure	J. Stockan
25/08/2025	NJ 05635 64104	Hymenoptera	<i>Myrmica ruginodis</i>	1	Adult	Pitfall trap	C. Maclure	J. Stockan
25/08/2025	NJ 05940 64031	Hymenoptera	<i>Myrmica ruginodis</i>	1	Adult	Pitfall trap	C. Maclure	J. Stockan
25/08/2025	NJ 06049 64509	Hymenoptera	<i>Myrmica ruginodis</i>	1	Adult	Pitfall trap	C. Maclure	J. Stockan

25/08/2025	NJ 06088 64487	Hymenoptera	<i>Myrmica ruginodis</i>	1	Adult	Pitfall trap	C. Maclure	J. Stockan
25/08/2025	NJ 06098 64550	Hymenoptera	<i>Myrmica ruginodis</i>	1+	Adult	Pitfall trap	C. Maclure	J. Stockan
22/09/2025	NJ 04778 63904	Hymenoptera	<i>Myrmica ruginodis</i>	1+	Adult	Pitfall trap	C. Maclure	J. Stockan
22/09/2025	NJ 04878 63980	Hymenoptera	<i>Myrmica ruginodis</i>	2	Adult	Pitfall trap	C. Maclure	J. Stockan
22/09/2025	NJ 05361 64028	Hymenoptera	<i>Myrmica ruginodis</i>	2+	Adult	Pitfall trap	C. Maclure	J. Stockan
22/09/2025	NJ 05378 64039	Hymenoptera	<i>Myrmica ruginodis</i>	12	Adult	Pitfall trap	C. Maclure	J. Stockan
22/09/2025	NJ 06049 64509	Hymenoptera	<i>Myrmica ruginodis</i>	1	Adult	Pitfall trap	C. Maclure	J. Stockan
20/10/2025	NJ 04778 63904	Hymenoptera	<i>Myrmica ruginodis</i>	2+	Adult	Pitfall trap	C. Maclure	J. Stockan
20/10/2025	NJ 04921 63968	Hymenoptera	<i>Myrmica ruginodis</i>	1	Adult	Pitfall trap	C. Maclure	J. Stockan
20/10/2025	NJ 05378 64039	Hymenoptera	<i>Myrmica ruginodis</i>	3	Adult	Pitfall trap	C. Maclure	J. Stockan
20/10/2025	NJ 06049 64509	Hymenoptera	<i>Myrmica ruginodis</i>	1	Adult	Pitfall trap	C. Maclure	J. Stockan
20/10/2025	NJ 06098 64550	Hymenoptera	<i>Myrmica ruginodis</i>	1	Adult	Pitfall trap	C. Maclure	J. Stockan
28/07/2025	NJ 04878 63980	Hymenoptera	<i>Myrmica sabuleti</i>	5	Adult	Pitfall trap	C. Maclure	J. Stockan
25/08/2025	NJ 04778 63904	Hymenoptera	<i>Myrmica sabuleti</i>	7+	Adult	Pitfall trap	C. Maclure	J. Stockan
22/09/2025	NJ 04778 63904	Hymenoptera	<i>Myrmica sabuleti</i>	50+	Adult	Pitfall trap	C. Maclure	J. Stockan
20/10/2025	NJ 04778 63904	Hymenoptera	<i>Myrmica sabuleti</i>	5+	Adult	Pitfall trap	C. Maclure	J. Stockan
28/07/2025	NJ 05098 64061	Hymenoptera	<i>Myrmica scabrinodis</i>	1	Adult	Pitfall trap	C. Maclure	J. Stockan
25/08/2025	NJ 04778 63904	Hymenoptera	<i>Myrmica scabrinodis</i>	12+	Adult	Pitfall trap	C. Maclure	J. Stockan
20/10/2025	NJ 04971 63810	Hymenoptera	<i>Myrmica scabrinodis</i>	1	Adult	Pitfall trap	C. Maclure	J. Stockan
25/08/2025	NJ 04921 63968	Coleoptera	<i>Nebria brevicollis</i>	1	Adult	Pitfall trap	C. Maclure	C. Maclure
25/08/2025	NJ 04938 64105	Coleoptera	<i>Nebria brevicollis</i>	1	Adult	Pitfall trap	C. Maclure	C. Maclure
25/08/2025	NJ 06088 64487	Coleoptera	<i>Nebria brevicollis</i>	1+	Adult	Pitfall trap	C. Maclure	C. Maclure
22/09/2025	NJ 04771 63933	Coleoptera	<i>Nebria brevicollis</i>	1+	Adult	Pitfall trap	C. Maclure	C. Maclure
22/09/2025	NJ 04778 63904	Coleoptera	<i>Nebria brevicollis</i>	1+	Adult	Pitfall trap	C. Maclure	C. Maclure
22/09/2025	NJ 04910 64154	Coleoptera	<i>Nebria brevicollis</i>	15	Adult	Pitfall trap	C. Maclure	C. Maclure
22/09/2025	NJ 04921 63968	Coleoptera	<i>Nebria brevicollis</i>	1	Adult	Pitfall trap	C. Maclure	C. Maclure
22/09/2025	NJ 04938 63880	Coleoptera	<i>Nebria brevicollis</i>	10	Adult	Pitfall trap	C. Maclure	C. Maclure
22/09/2025	NJ 04938 64105	Coleoptera	<i>Nebria brevicollis</i>	7	Adult	Pitfall trap	C. Maclure	C. Maclure
22/09/2025	NJ 04959 63801	Coleoptera	<i>Nebria brevicollis</i>	1	Adult	Pitfall trap	C. Maclure	C. Maclure
22/09/2025	NJ 04971 63810	Coleoptera	<i>Nebria brevicollis</i>	1	Adult	Pitfall trap	C. Maclure	C. Maclure

22/09/2025	NJ 05060 64060	Coleoptera	<i>Nebria brevicollis</i>	7	Adult	Pitfall trap	C. Maclure	C. Maclure
22/09/2025	NJ 05361 64028	Coleoptera	<i>Nebria brevicollis</i>	1	Adult	Pitfall trap	C. Maclure	C. Maclure
22/09/2025	NJ 05940 64031	Coleoptera	<i>Nebria brevicollis</i>	7	Adult	Pitfall trap	C. Maclure	C. Maclure
20/10/2025	NJ 04771 63933	Coleoptera	<i>Nebria brevicollis</i>	15	Adult	Pitfall trap	C. Maclure	C. Maclure
20/10/2025	NJ 04910 64154	Coleoptera	<i>Nebria brevicollis</i>	3	Adult	Pitfall trap	C. Maclure	C. Maclure
20/10/2025	NJ 04938 63880	Coleoptera	<i>Nebria brevicollis</i>	6	Adult	Pitfall trap	C. Maclure	C. Maclure
20/10/2025	NJ 04938 64105	Coleoptera	<i>Nebria brevicollis</i>	1	Adult	Pitfall trap	C. Maclure	C. Maclure
20/10/2025	NJ 05060 64060	Coleoptera	<i>Nebria brevicollis</i>	15	Adult	Pitfall trap	C. Maclure	C. Maclure
20/10/2025	NJ 05098 64061	Coleoptera	<i>Nebria brevicollis</i>	1	Adult	Pitfall trap	C. Maclure	C. Maclure
20/10/2025	NJ 05361 64028	Coleoptera	<i>Nebria brevicollis</i>	1	Adult	Pitfall trap	C. Maclure	C. Maclure
20/10/2025	NJ 05940 64031	Coleoptera	<i>Nebria brevicollis</i>	7	Adult	Pitfall trap	C. Maclure	C. Maclure
25/08/2025	NJ 05635 64104	Araneae	<i>Neon reticulatus</i>	1		Pitfall trap	C. Maclure	C. Maclure
25/08/2025	NJ 05361 64028	Coleoptera	<i>Nicrophorus vespilloides</i>	1	Adult	Pitfall trap	C. Maclure	C. Maclure
25/08/2025	NJ 06049 64509	Coleoptera	<i>Nicrophorus vespilloides</i>	1	Adult	Pitfall trap	C. Maclure	C. Maclure
22/09/2025	NJ 04910 64154	Hemiptera	<i>Nysius thymi</i>	1		Pitfall trap	C. Maclure	C. Maclure
28/07/2025	NJ 04778 63904	Coleoptera	<i>Ocypus brunripes</i>	1	Adult	Pitfall trap	C. Maclure	C. Maclure
25/08/2025	NJ 05687 64163	Coleoptera	<i>Ocypus olens</i>	1	Adult	Pitfall trap	C. Maclure	C. Maclure
25/08/2025	NJ 06088 64487	Coleoptera	<i>Ocypus olens</i>	1	Adult	Pitfall trap	C. Maclure	C. Maclure
22/09/2025	NJ 04971 63810	Coleoptera	<i>Ocypus olens</i>	2	Adult	Pitfall trap	C. Maclure	C. Maclure
22/09/2025	NJ 05687 64163	Coleoptera	<i>Ocypus olens</i>	1	Adult	Pitfall trap	C. Maclure	C. Maclure
20/10/2025	NJ 04971 63810	Coleoptera	<i>Ocypus olens</i>	1	Adult	Pitfall trap	C. Maclure	C. Maclure
22/09/2025	NJ 04938 63880	Coleoptera	<i>Olophrum piceum</i>	2	Adult	Pitfall trap	C. Maclure	C. Maclure
22/09/2025	NJ 04971 63810	Coleoptera	<i>Olophrum piceum</i>	1	Adult	Pitfall trap	C. Maclure	C. Maclure
22/09/2025	NJ 06088 64487	Coleoptera	<i>Olophrum piceum</i>	2	Adult	Pitfall trap	C. Maclure	C. Maclure
20/10/2025	NJ 05361 64028	Coleoptera	<i>Olophrum piceum</i>	1	Adult	Pitfall trap	C. Maclure	C. Maclure
20/10/2025	NJ 05618 64092	Coleoptera	<i>Olophrum piceum</i>	3	Adult	Pitfall trap	C. Maclure	C. Maclure
20/10/2025	NJ 06098 64550	Coleoptera	<i>Olophrum piceum</i>	1	Adult	Pitfall trap	C. Maclure	C. Maclure
28/07/2025	NJ 05752 64181	Orthoptera	<i>Omocestus viridulus</i>	1		Pitfall trap	C. Maclure	C. Maclure
22/09/2025	NJ 04921 63968	Coleoptera	<i>Oxytelus sculptus</i>	1	Adult	Pitfall trap	C. Maclure	C. Maclure
25/08/2025	NJ 05635 64104	Araneae	<i>Ozyptila trux</i>	1		Pitfall trap	C. Maclure	C. Maclure

22/09/2025	NJ 05635 64104	Araneae	<i>Pachygnatha degeeri</i>	1		Pitfall trap	C. Maclure	C. Maclure
22/09/2025	NJ 05752 64181	Coleoptera	<i>Philonthus cognatus</i>	1	Adult	Pitfall trap	C. Maclure	C. Maclure
25/08/2025	NJ 04910 64154	Coleoptera	<i>Philopodon plagiatum</i>	1	Adult	Pitfall trap	C. Maclure	C. Maclure
28/07/2025	NJ 04921 63968	Coleoptera	<i>Phloeotribus rhododactylus</i>	1	Adult	Pitfall trap	C. Maclure	C. Maclure
22/09/2025	NJ 04878 63980	Coleoptera	<i>Phosphuga atrata</i>	1	Adult	Pitfall trap	C. Maclure	C. Maclure
25/08/2025	NJ 05060 64060	Hymenoptera	<i>Priocnemis parvula</i>	1	Adult	Pitfall trap	C. Maclure	C. Maclure
12/03/2025	NJ 06 SE	Coleoptera	<i>Protopirapion atratum</i>	1	Adult	Hand collection	A. Featherstone	C. Maclure
28/07/2025	NJ 04771 63933	Coleoptera	<i>Pterostichus madidus</i>	1	Adult	Pitfall trap	C. Maclure	C. Maclure
28/07/2025	NJ 04778 63904	Coleoptera	<i>Pterostichus madidus</i>	1	Adult	Pitfall trap	C. Maclure	C. Maclure
28/07/2025	NJ 04959 63801	Coleoptera	<i>Pterostichus madidus</i>	2	Adult	Pitfall trap	C. Maclure	J. Stockan
28/07/2025	NJ 05687 64163	Coleoptera	<i>Pterostichus madidus</i>	8	Adult	Pitfall trap	C. Maclure	C. Maclure
28/07/2025	NJ 05752 64181	Coleoptera	<i>Pterostichus madidus</i>	9	Adult	Pitfall trap	C. Maclure	C. Maclure
28/07/2025	NJ 05940 64031	Coleoptera	<i>Pterostichus madidus</i>	4	Adult	Pitfall trap	C. Maclure	C. Maclure
28/07/2025	NJ 06049 64509	Coleoptera	<i>Pterostichus madidus</i>	1+	Adult	Pitfall trap	C. Maclure	C. Maclure
28/07/2025	NJ 06088 64487	Coleoptera	<i>Pterostichus madidus</i>	16	Adult	Pitfall trap	C. Maclure	C. Maclure
28/07/2025	NJ 06098 64550	Coleoptera	<i>Pterostichus madidus</i>	69	Adult	Pitfall trap	C. Maclure	J. Stockan
25/08/2025	NJ 04778 63904	Coleoptera	<i>Pterostichus madidus</i>	1+	Adult	Pitfall trap	C. Maclure	C. Maclure
25/08/2025	NJ 04910 64154	Coleoptera	<i>Pterostichus madidus</i>	1	Adult	Pitfall trap	C. Maclure	C. Maclure
25/08/2025	NJ 04938 63880	Coleoptera	<i>Pterostichus madidus</i>	1	Adult	Pitfall trap	C. Maclure	C. Maclure
25/08/2025	NJ 04959 63801	Coleoptera	<i>Pterostichus madidus</i>	1+	Adult	Pitfall trap	C. Maclure	C. Maclure
25/08/2025	NJ 04971 63810	Coleoptera	<i>Pterostichus madidus</i>	1+	Adult	Pitfall trap	C. Maclure	C. Maclure
25/08/2025	NJ 05098 64061	Coleoptera	<i>Pterostichus madidus</i>	1	Adult	Pitfall trap	C. Maclure	C. Maclure
25/08/2025	NJ 05687 64163	Coleoptera	<i>Pterostichus madidus</i>	1+	Adult	Pitfall trap	C. Maclure	C. Maclure
25/08/2025	NJ 05752 64181	Coleoptera	<i>Pterostichus madidus</i>	1+	Adult	Pitfall trap	C. Maclure	C. Maclure
25/08/2025	NJ 05940 64031	Coleoptera	<i>Pterostichus madidus</i>	8	Adult	Pitfall trap	C. Maclure	C. Maclure
25/08/2025	NJ 06049 64509	Coleoptera	<i>Pterostichus madidus</i>	1+	Adult	Pitfall trap	C. Maclure	C. Maclure
25/08/2025	NJ 06088 64487	Coleoptera	<i>Pterostichus madidus</i>	1+	Adult	Pitfall trap	C. Maclure	C. Maclure
25/08/2025	NJ 06098 64550	Coleoptera	<i>Pterostichus madidus</i>	1+	Adult	Pitfall trap	C. Maclure	C. Maclure
22/09/2025	NJ 04778 63904	Coleoptera	<i>Pterostichus madidus</i>	1+	Adult	Pitfall trap	C. Maclure	C. Maclure
22/09/2025	NJ 04938 63880	Coleoptera	<i>Pterostichus madidus</i>	1	Adult	Pitfall trap	C. Maclure	C. Maclure

22/09/2025	NJ 04959 63801	Coleoptera	<i>Pterostichus madidus</i>	2	Adult	Pitfall trap	C. Maclure	C. Maclure
22/09/2025	NJ 04971 63810	Coleoptera	<i>Pterostichus madidus</i>	2	Adult	Pitfall trap	C. Maclure	C. Maclure
22/09/2025	NJ 05687 64163	Coleoptera	<i>Pterostichus madidus</i>	15	Adult	Pitfall trap	C. Maclure	C. Maclure
22/09/2025	NJ 05752 64181	Coleoptera	<i>Pterostichus madidus</i>	9	Adult	Pitfall trap	C. Maclure	C. Maclure
22/09/2025	NJ 05940 64031	Coleoptera	<i>Pterostichus madidus</i>	1	Adult	Pitfall trap	C. Maclure	C. Maclure
22/09/2025	NJ 06049 64509	Coleoptera	<i>Pterostichus madidus</i>	21	Adult	Pitfall trap	C. Maclure	C. Maclure
22/09/2025	NJ 06088 64487	Coleoptera	<i>Pterostichus madidus</i>	11	Adult	Pitfall trap	C. Maclure	C. Maclure
22/09/2025	NJ 06098 64550	Coleoptera	<i>Pterostichus madidus</i>	1+	Adult	Pitfall trap	C. Maclure	C. Maclure
20/10/2025	NJ 04771 63933	Coleoptera	<i>Pterostichus madidus</i>	1	Adult	Pitfall trap	C. Maclure	C. Maclure
20/10/2025	NJ 04778 63904	Coleoptera	<i>Pterostichus madidus</i>	2	Adult	Pitfall trap	C. Maclure	C. Maclure
20/10/2025	NJ 05687 64163	Coleoptera	<i>Pterostichus madidus</i>	7	Adult	Pitfall trap	C. Maclure	C. Maclure
20/10/2025	NJ 05752 64181	Coleoptera	<i>Pterostichus madidus</i>	5	Adult	Pitfall trap	C. Maclure	C. Maclure
20/10/2025	NJ 06049 64509	Coleoptera	<i>Pterostichus madidus</i>	7	Adult	Pitfall trap	C. Maclure	C. Maclure
20/10/2025	NJ 06088 64487	Coleoptera	<i>Pterostichus madidus</i>	5	Adult	Pitfall trap	C. Maclure	C. Maclure
20/10/2025	NJ 06098 64550	Coleoptera	<i>Pterostichus madidus</i>	8	Adult	Pitfall trap	C. Maclure	C. Maclure
28/07/2025	NJ 04903 63969	Coleoptera	<i>Pterostichus niger</i>	12	Adult	Pitfall trap	C. Maclure	C. Maclure
28/07/2025	NJ 04921 63968	Coleoptera	<i>Pterostichus niger</i>	2	Adult	Pitfall trap	C. Maclure	C. Maclure
28/07/2025	NJ 06049 64509	Coleoptera	<i>Pterostichus niger</i>	1+	Adult	Pitfall trap	C. Maclure	C. Maclure
28/07/2025	NJ 06098 64550	Coleoptera	<i>Pterostichus niger</i>	12	Adult	Pitfall trap	C. Maclure	J. Stockan
25/08/2025	NJ 04878 63980	Coleoptera	<i>Pterostichus niger</i>	4	Adult	Pitfall trap	C. Maclure	C. Maclure
25/08/2025	NJ 04903 63969	Coleoptera	<i>Pterostichus niger</i>	9	Adult	Pitfall trap	C. Maclure	C. Maclure
25/08/2025	NJ 04921 63968	Coleoptera	<i>Pterostichus niger</i>	4	Adult	Pitfall trap	C. Maclure	C. Maclure
25/08/2025	NJ 04971 63810	Coleoptera	<i>Pterostichus niger</i>	1	Adult	Pitfall trap	C. Maclure	C. Maclure
25/08/2025	NJ 05618 64092	Coleoptera	<i>Pterostichus niger</i>	4	Adult	Pitfall trap	C. Maclure	C. Maclure
25/08/2025	NJ 06049 64509	Coleoptera	<i>Pterostichus niger</i>	6	Adult	Pitfall trap	C. Maclure	C. Maclure
25/08/2025	NJ 06088 64487	Coleoptera	<i>Pterostichus niger</i>	1+	Adult	Pitfall trap	C. Maclure	C. Maclure
25/08/2025	NJ 06098 64550	Coleoptera	<i>Pterostichus niger</i>	1+	Adult	Pitfall trap	C. Maclure	C. Maclure
22/09/2025	NJ 04778 63904	Coleoptera	<i>Pterostichus niger</i>	2	Adult	Pitfall trap	C. Maclure	C. Maclure
22/09/2025	NJ 04878 63980	Coleoptera	<i>Pterostichus niger</i>	2	Adult	Pitfall trap	C. Maclure	C. Maclure
22/09/2025	NJ 04903 63969	Coleoptera	<i>Pterostichus niger</i>	1	Adult	Pitfall trap	C. Maclure	C. Maclure

22/09/2025	NJ 04910 64154	Coleoptera	<i>Pterostichus niger</i>	1	Adult	Pitfall trap	C. Maclure	C. Maclure
22/09/2025	NJ 04938 64105	Coleoptera	<i>Pterostichus niger</i>	1	Adult	Pitfall trap	C. Maclure	C. Maclure
22/09/2025	NJ 04971 63810	Coleoptera	<i>Pterostichus niger</i>	3	Adult	Pitfall trap	C. Maclure	C. Maclure
22/09/2025	NJ 05687 64163	Coleoptera	<i>Pterostichus niger</i>	1	Adult	Pitfall trap	C. Maclure	C. Maclure
22/09/2025	NJ 06049 64509	Coleoptera	<i>Pterostichus niger</i>	6	Adult	Pitfall trap	C. Maclure	C. Maclure
22/09/2025	NJ 06088 64487	Coleoptera	<i>Pterostichus niger</i>	5	Adult	Pitfall trap	C. Maclure	C. Maclure
22/09/2025	NJ 06098 64550	Coleoptera	<i>Pterostichus niger</i>	1+	Adult	Pitfall trap	C. Maclure	C. Maclure
20/10/2025	NJ 06049 64509	Coleoptera	<i>Pterostichus niger</i>	1	Adult	Pitfall trap	C. Maclure	C. Maclure
20/10/2025	NJ 06088 64487	Coleoptera	<i>Pterostichus niger</i>	1	Adult	Pitfall trap	C. Maclure	C. Maclure
22/09/2025	NJ 05361 64028	Coleoptera	<i>Quedius fumatus</i>	1	Adult	Pitfall trap	C. Maclure	C. Maclure
25/08/2025	NJ 05378 64039	Coleoptera	<i>Quedius lateralis</i>	1	Adult	Pitfall trap	C. Maclure	C. Maclure
25/08/2025	NJ 05618 64092	Diptera	<i>Rhagio lineola</i>	1	Adult	Pitfall trap	C. Maclure	C. Maclure
06/06/2025	NJ 06 SE	Coleoptera	<i>Rhagonycha lignosa</i>	1	Adult	Hand collection	A. Featherstone	C. Maclure
09/07/2025	NJ 06 SE	Coleoptera	<i>Rhagonycha lignosa</i>	1	Adult	Hand collection	A. Featherstone	J. Stockan
25/08/2025	NJ 05098 64061	Coleoptera	<i>Rhinoncus castor</i>	1	Adult	Pitfall trap	C. Maclure	C. Maclure
22/09/2025	NJ 04921 63968	Coleoptera	<i>Sciodrepoides fumatus</i>	2	Adult	Pitfall trap	C. Maclure	C. Maclure
22/09/2025	NJ 05361 64028	Coleoptera	<i>Sciodrepoides fumatus</i>	11	Adult	Pitfall trap	C. Maclure	C. Maclure
22/09/2025	NJ 06049 64509	Coleoptera	<i>Sciodrepoides fumatus</i>	1	Adult	Pitfall trap	C. Maclure	C. Maclure
20/10/2025	NJ 05361 64028	Coleoptera	<i>Sciodrepoides fumatus</i>	6	Adult	Pitfall trap	C. Maclure	C. Maclure
20/10/2025	NJ 05378 64039	Coleoptera	<i>Sciodrepoides fumatus</i>	1	Adult	Pitfall trap	C. Maclure	C. Maclure
20/10/2025	NJ 06049 64509	Coleoptera	<i>Sciodrepoides fumatus</i>	1	Adult	Pitfall trap	C. Maclure	C. Maclure
28/07/2025	NJ 05752 64181	Coleoptera	<i>Sciodrepoides watsoni</i>	1	Adult	Pitfall trap	C. Maclure	C. Maclure
25/08/2025	NJ 04921 63968	Coleoptera	<i>Sciodrepoides watsoni</i>	1	Adult	Pitfall trap	C. Maclure	C. Maclure
28/07/2025	NJ 04959 63801	Hemiptera	<i>Scolopostethus decoratus</i>	1		Pitfall trap	C. Maclure	C. Maclure
25/08/2025	NJ 06088 64487	Hemiptera	<i>Scolopostethus decoratus</i>	1		Pitfall trap	C. Maclure	C. Maclure
25/08/2025	NJ 06098 64550	Hemiptera	<i>Scolopostethus decoratus</i>	1		Pitfall trap	C. Maclure	C. Maclure
28/07/2025	NJ 04921 63968	Coleoptera	<i>Serica brunnea</i>	1	Adult	Pitfall trap	C. Maclure	C. Maclure
28/07/2025	NJ 04938 63880	Coleoptera	<i>Serica brunnea</i>	1	Adult	Pitfall trap	C. Maclure	C. Maclure
28/07/2025	NJ 05060 64060	Coleoptera	<i>Serica brunnea</i>	3	Adult	Pitfall trap	C. Maclure	C. Maclure
28/07/2025	NJ 05075 64075	Coleoptera	<i>Serica brunnea</i>	1	Adult	Pitfall trap	C. Maclure	C. Maclure

28/07/2025	NJ 05752 64181	Coleoptera	<i>Serica brunnea</i>	1	Adult	Pitfall trap	C. Maclure	C. Maclure
28/07/2025	NJ 05940 64031	Coleoptera	<i>Serica brunnea</i>	1	Adult	Pitfall trap	C. Maclure	C. Maclure
25/08/2025	NJ 04910 64154	Coleoptera	<i>Serica brunnea</i>	2	Adult	Pitfall trap	C. Maclure	C. Maclure
25/08/2025	NJ 04986 64107	Coleoptera	<i>Serica brunnea</i>	1	Adult	Pitfall trap	C. Maclure	C. Maclure
25/08/2025	NJ 05040 64004	Coleoptera	<i>Serica brunnea</i>	6	Adult	Pitfall trap	C. Maclure	C. Maclure
25/08/2025	NJ 05075 64075	Coleoptera	<i>Serica brunnea</i>	1	Adult	Pitfall trap	C. Maclure	C. Maclure
25/08/2025	NJ 05361 64028	Coleoptera	<i>Serica brunnea</i>	4	Adult	Pitfall trap	C. Maclure	C. Maclure
25/08/2025	NJ 05378 64039	Coleoptera	<i>Serica brunnea</i>	1	Adult	Pitfall trap	C. Maclure	C. Maclure
25/08/2025	NJ 05378 64039	Coleoptera	<i>Serica brunnea</i>	2	Adult	Pitfall trap	C. Maclure	C. Maclure
22/09/2025	NJ 05378 64039	Coleoptera	<i>Serica brunnea</i>	1	Adult	Pitfall trap	C. Maclure	C. Maclure
28/07/2025	NJ 04778 63904	Coleoptera	<i>Staphylinus dimidiaticornis</i>	1	Adult	Pitfall trap	C. Maclure	C. Maclure
28/07/2025	NJ 05752 64181	Coleoptera	<i>Staphylinus dimidiaticornis</i>	3	Adult	Pitfall trap	C. Maclure	C. Maclure
25/08/2025	NJ 05687 64163	Coleoptera	<i>Staphylinus dimidiaticornis</i>	1	Adult	Pitfall trap	C. Maclure	C. Maclure
25/08/2025	NJ 06049 64509	Coleoptera	<i>Staphylinus dimidiaticornis</i>	2	Adult	Pitfall trap	C. Maclure	C. Maclure
25/08/2025	NJ 04878 63980	Coleoptera	<i>Stenichnus collaris</i>	1	Adult	Pitfall trap	C. Maclure	C. Maclure
25/08/2025	NJ 05635 64104	Coleoptera	<i>Stenichnus collaris</i>	1	Adult	Pitfall trap	C. Maclure	C. Maclure
13/07/2025	NJ 06 SE	Coleoptera	<i>Strophosoma melanogrammum</i>	1	Adult	Hand collection	A. Featherstone	C. Maclure
28/07/2025	NJ 05378 64039	Coleoptera	<i>Strophosoma melanogrammum</i>	1	Adult	Pitfall trap	C. Maclure	C. Maclure
28/07/2025	NJ 06049 64509	Coleoptera	<i>Strophosoma melanogrammum</i>	2	Adult	Pitfall trap	C. Maclure	C. Maclure
22/09/2025	NJ 05378 64039	Coleoptera	<i>Strophosoma melanogrammum</i>	1	Adult	Pitfall trap	C. Maclure	C. Maclure
22/09/2025	NJ 06098 64550	Coleoptera	<i>Strophosoma melanogrammum</i>	1	Adult	Pitfall trap	C. Maclure	C. Maclure
20/10/2025	NJ 04959 63801	Coleoptera	<i>Strophosoma melanogrammum</i>	1	Adult	Pitfall trap	C. Maclure	C. Maclure
20/10/2025	NJ 05940 64031	Coleoptera	<i>Strophosoma melanogrammum</i>	1	Adult	Pitfall trap	C. Maclure	C. Maclure
25/08/2025	NJ 04910 64154	Coleoptera	<i>Strophosoma sus</i>	3	Adult	Pitfall trap	C. Maclure	C. Maclure
28/07/2025	NJ 06098 64550	Hemiptera	<i>Stygnocoris sabulosus</i>	1		Pitfall trap	C. Maclure	C. Maclure
25/08/2025	NJ 04910 64154	Hemiptera	<i>Stygnocoris sabulosus</i>	1		Pitfall trap	C. Maclure	C. Maclure
22/09/2025	NJ 04921 63968	Hemiptera	<i>Stygnocoris sabulosus</i>	2		Pitfall trap	C. Maclure	C. Maclure
22/09/2025	NJ 05378 64039	Hemiptera	<i>Stygnocoris sabulosus</i>	1		Pitfall trap	C. Maclure	C. Maclure
25/08/2025	NJ 05098 64061	Coleoptera	<i>Syntomus foveatus</i>	1	Adult	Pitfall trap	C. Maclure	C. Maclure
20/10/2025	NJ 04971 63810	Coleoptera	<i>Syntomus foveatus</i>	1	Adult	Pitfall trap	C. Maclure	C. Maclure

28/07/2025	NJ 06098 64550	Coleoptera	<i>Synuchus vivalis</i>	1	Adult	Pitfall trap	C. Maclure	C. Maclure
28/07/2025	NJ 04903 63969	Coleoptera	<i>Tachinus corticinus</i>	2	Adult	Pitfall trap	C. Maclure	C. Maclure
28/07/2025	NJ 04921 63968	Coleoptera	<i>Tachinus corticinus</i>	1	Adult	Pitfall trap	C. Maclure	C. Maclure
28/07/2025	NJ 04921 63968	Coleoptera	<i>Tachinus laticollis</i>	2	Adult	Pitfall trap	C. Maclure	C. Maclure
20/10/2025	NJ 04959 63801	Coleoptera	<i>Tachyporus chrysomelinus</i>	1	Adult	Pitfall trap	C. Maclure	C. Maclure
20/10/2025	NJ 04971 63810	Coleoptera	<i>Tachyporus chrysomelinus</i>	1	Adult	Pitfall trap	C. Maclure	C. Maclure
25/08/2025	NJ 04971 63810	Coleoptera	<i>Tasgius morsitans</i>	1	Adult	Pitfall trap	C. Maclure	C. Maclure
25/08/2025	NJ 06098 64550	Coleoptera	<i>Tasgius morsitans</i>	1	Adult	Pitfall trap	C. Maclure	C. Maclure
22/09/2025	NJ 04959 63801	Coleoptera	<i>Tasgius morsitans</i>	1	Adult	Pitfall trap	C. Maclure	C. Maclure
20/10/2025	NJ 04959 63801	Coleoptera	<i>Tasgius morsitans</i>	1	Adult	Pitfall trap	C. Maclure	C. Maclure
20/10/2025	NJ 05940 64031	Coleoptera	<i>Tasgius morsitans</i>	2	Adult	Pitfall trap	C. Maclure	C. Maclure
22/09/2025	NJ 04878 63980	Araneae	<i>Tenuiphantes tenuis</i>	1		Pitfall trap	C. Maclure	C. Maclure
22/09/2025	NJ 04938 63880	Araneae	<i>Tenuiphantes tenuis</i>	3		Pitfall trap	C. Maclure	C. Maclure
22/09/2025	NJ 05378 64039	Araneae	<i>Tenuiphantes tenuis</i>	1		Pitfall trap	C. Maclure	C. Maclure
22/09/2025	NJ 05687 64163	Araneae	<i>Tenuiphantes tenuis</i>	1		Pitfall trap	C. Maclure	C. Maclure
22/09/2025	NJ 05752 64181	Araneae	<i>Tenuiphantes tenuis</i>	1		Pitfall trap	C. Maclure	C. Maclure
20/10/2025	NJ 04778 63904	Araneae	<i>Tenuiphantes tenuis</i>	1		Pitfall trap	C. Maclure	C. Maclure
20/10/2025	NJ 04921 63968	Araneae	<i>Tenuiphantes tenuis</i>	2		Pitfall trap	C. Maclure	C. Maclure
20/10/2025	NJ 05361 64028	Araneae	<i>Tenuiphantes tenuis</i>	2		Pitfall trap	C. Maclure	C. Maclure
20/10/2025	NJ 05378 64039	Araneae	<i>Tenuiphantes tenuis</i>	2		Pitfall trap	C. Maclure	C. Maclure
20/10/2025	NJ 05752 64181	Araneae	<i>Tenuiphantes tenuis</i>	1		Pitfall trap	C. Maclure	C. Maclure
28/07/2025	NJ 05060 64060	Diptera	<i>Thereva nobilitata</i>	1		Pitfall trap	C. Maclure	C. Maclure
28/07/2025	NJ 04778 63904	Hemiptera	<i>Trapezonotus desertus</i>	1		Pitfall trap	C. Maclure	C. Maclure
25/08/2025	NJ 06098 64550	Coleoptera	<i>Trechus obtusus</i>	1	Adult	Pitfall trap	C. Maclure	C. Maclure
22/09/2025	NJ 06049 64509	Coleoptera	<i>Trechus obtusus</i>	1	Adult	Pitfall trap	C. Maclure	C. Maclure
25/08/2025	NJ 05635 64104	Araneae	<i>Trochosa ruricola</i>	2		Pitfall trap	C. Maclure	C. Maclure
25/08/2025	NJ 06049 64509	Araneae	<i>Trochosa ruricola</i>	2		Pitfall trap	C. Maclure	C. Maclure
25/08/2025	NJ 06098 64550	Araneae	<i>Trochosa ruricola</i>	2		Pitfall trap	C. Maclure	C. Maclure
22/09/2025	NJ 04938 64105	Araneae	<i>Trochosa ruricola</i>	1		Pitfall trap	C. Maclure	C. Maclure
22/09/2025	NJ 05687 64163	Araneae	<i>Trochosa ruricola</i>	1		Pitfall trap	C. Maclure	C. Maclure

22/09/2025	NJ 05752 64181	Araneae	<i>Trochosa ruricola</i>	1		Pitfall trap	C. Maclure	C. Maclure
22/09/2025	NJ 05940 64031	Araneae	<i>Trochosa ruricola</i>	2		Pitfall trap	C. Maclure	C. Maclure
22/09/2025	NJ 06088 64487	Araneae	<i>Trochosa ruricola</i>	2		Pitfall trap	C. Maclure	C. Maclure
28/07/2025	NJ 04778 63904	Araneae	<i>Trochosa terricola</i>	2		Pitfall trap	C. Maclure	C. Maclure
28/07/2025	NJ 06098 64550	Araneae	<i>Trochosa terricola</i>	6		Pitfall trap	C. Maclure	C. Maclure
25/08/2025	NJ 04938 63880	Araneae	<i>Trochosa terricola</i>	1		Pitfall trap	C. Maclure	C. Maclure
25/08/2025	NJ 05060 64060	Araneae	<i>Trochosa terricola</i>	1		Pitfall trap	C. Maclure	C. Maclure
22/09/2025	NJ 04778 63904	Araneae	<i>Trochosa terricola</i>	2		Pitfall trap	C. Maclure	C. Maclure
22/09/2025	NJ 05940 64031	Araneae	<i>Trochosa terricola</i>	3		Pitfall trap	C. Maclure	C. Maclure
22/09/2025	NJ 06098 64550	Araneae	<i>Trochosa terricola</i>	1		Pitfall trap	C. Maclure	C. Maclure
28/07/2025	NJ 06049 64509	Coleoptera	<i>Trypocopris vernalis</i>	1	Adult	Pitfall trap	C. Maclure	C. Maclure
25/08/2025	NJ 05618 64092	Coleoptera	<i>Trypocopris vernalis</i>	1	Adult	Pitfall trap	C. Maclure	C. Maclure
25/08/2025	NJ 06098 64550	Coleoptera	<i>Trypocopris vernalis</i>	2	Adult	Pitfall trap	C. Maclure	C. Maclure
22/09/2025	NJ 05635 64104	Coleoptera	<i>Trypocopris vernalis</i>	1	Adult	Pitfall trap	C. Maclure	C. Maclure
28/07/2025	NJ 05378 64039	Hemiptera	<i>Ulopa reticulata</i>	1		Pitfall trap	C. Maclure	C. Maclure
25/08/2025	NJ 05060 64060	Hymenoptera	<i>Vespula germanica</i>	1	Adult	Pitfall trap	C. Maclure	C. Maclure
28/07/2025	NJ 04771 63933	Hymenoptera	<i>Vespula vulgaris</i>	1	Adult	Pitfall trap	C. Maclure	C. Maclure
28/07/2025	NJ 04878 63980	Hymenoptera	<i>Vespula vulgaris</i>	1	Adult	Pitfall trap	C. Maclure	C. Maclure
28/07/2025	NJ 04921 63968	Hymenoptera	<i>Vespula vulgaris</i>	5	Adult	Pitfall trap	C. Maclure	C. Maclure
28/07/2025	NJ 04971 63810	Hymenoptera	<i>Vespula vulgaris</i>	1	Adult	Pitfall trap	C. Maclure	C. Maclure
28/07/2025	NJ 05361 64028	Hymenoptera	<i>Vespula vulgaris</i>	22	Adult	Pitfall trap	C. Maclure	C. Maclure
28/07/2025	NJ 05618 64092	Hymenoptera	<i>Vespula vulgaris</i>	3	Adult	Pitfall trap	C. Maclure	C. Maclure
25/08/2025	NJ 04910 64154	Hymenoptera	<i>Vespula vulgaris</i>	2	Adult	Pitfall trap	C. Maclure	C. Maclure
25/08/2025	NJ 04959 63801	Hymenoptera	<i>Vespula vulgaris</i>	1	Adult	Pitfall trap	C. Maclure	C. Maclure
25/08/2025	NJ 04971 63810	Hymenoptera	<i>Vespula vulgaris</i>	1	Adult	Pitfall trap	C. Maclure	C. Maclure
25/08/2025	NJ 05361 64028	Hymenoptera	<i>Vespula vulgaris</i>	4	Adult	Pitfall trap	C. Maclure	C. Maclure
25/08/2025	NJ 05378 64039	Hymenoptera	<i>Vespula vulgaris</i>	14	Adult	Pitfall trap	C. Maclure	C. Maclure
25/08/2025	NJ 04959 63801	Araneae	<i>Xysticus cristatus</i>	1		Pitfall trap	C. Maclure	C. Maclure



### **Aberdeen**

The James Hutton Institute  
Craigiebuckler  
Aberdeen AB15 8QH  
Scotland  
UK

### **Farms**

Balruddery Research Farm  
Invergowrie  
Dundee DD2 5LJ

### **Dundee**

The James Hutton Institute  
Invergowrie  
Dundee DD2 5DA  
Scotland  
UK

Glensaugh Research Farm  
Laurencekirk  
Aberdeenshire AB30 1HB

### **Contact**

Tel: +44 (0) 344 928 5428  
Fax: +44 (0) 344 928 5429

[info@hutton.ac.uk](mailto:info@hutton.ac.uk)